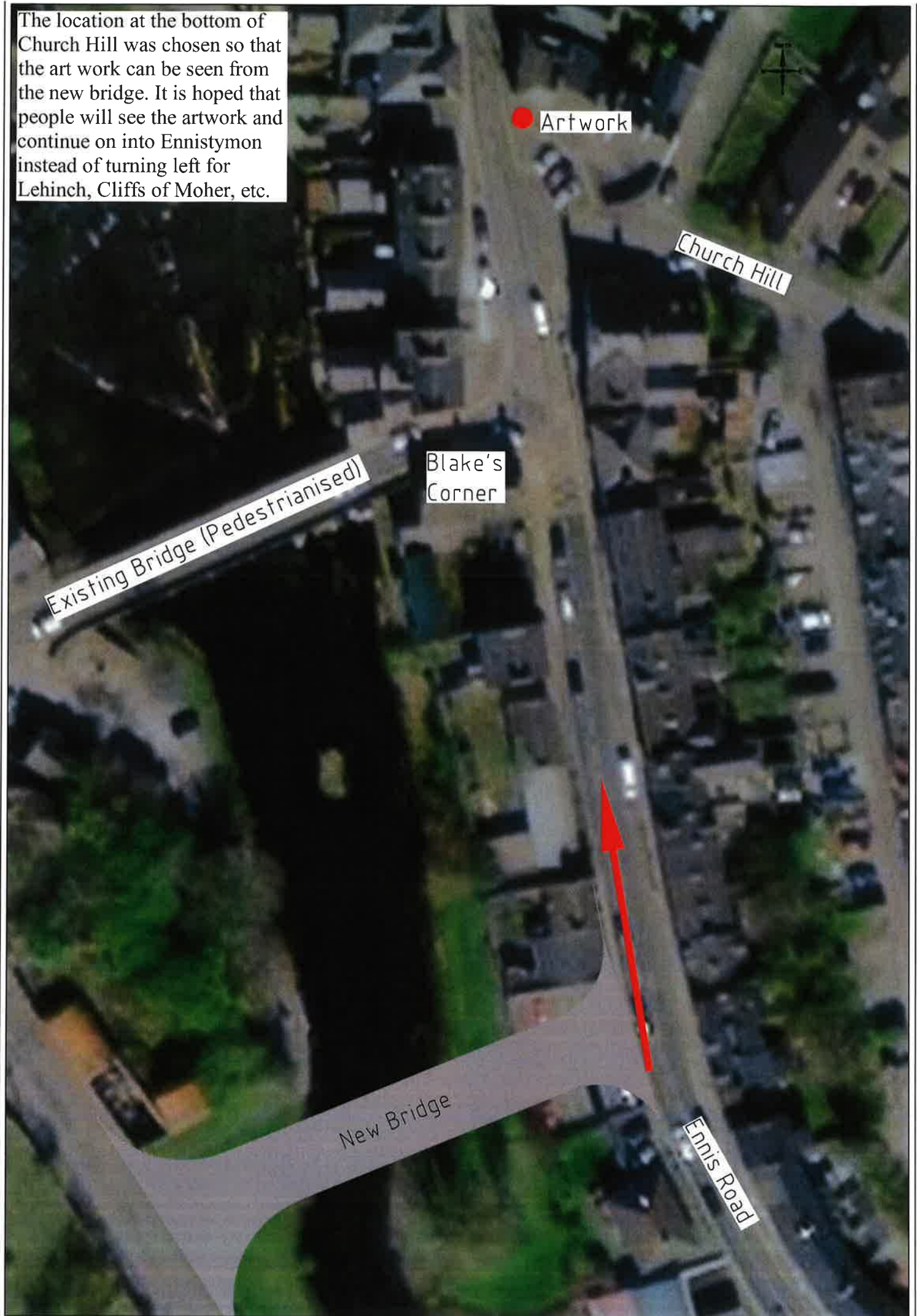


The location at the bottom of Church Hill was chosen so that the art work can be seen from the new bridge. It is hoped that people will see the artwork and continue on into Ennistymon instead of turning left for Lehinch, Cliffs of Moher, etc.



The location at the bottom of Church Hill was chosen so that the art work can be seen from the new bridge. It is hoped that people will see the artwork and continue on into Ennistymon instead of turning left for Lehinch, Cliffs of Moher, etc.



Artwork

Church Hill

Existing Bridge (Pedestrianised)

Blake's Corner

New Bridge

Ennis Road