



Clare County Local Economic & Community Plan 2015 – 2021

Habitats Directive Assessment

Stage 1: Screening for
Appropriate Assessment

Prepared for Clare County Council

29th March 2016

Table of Contents

<u>1</u>	<u>INTRODUCTION</u>	<u>1</u>
1.1	HABITATS DIRECTIVE ASSESSMENT	1
<u>2</u>	<u>SCREENING METHODOLOGY</u>	<u>2</u>
2.1	INTRODUCTION	2
2.2	APPROACH TO HABITATS DIRECTIVE SCREENING FOR APPROPRIATE ASSESSMENT	3
2.3	CONSULTATION	3
<u>3</u>	<u>DESCRIPTION OF THE LECP</u>	<u>3</u>
3.1	BACKGROUND TO THE SOCIO-ECONOMIC STATEMENT & LECP	3
3.2	THE LECP	4
<u>4</u>	<u>EUROPEAN SITES</u>	<u>5</u>
4.1	OVERVIEW OF EUROPEAN SITES	5
4.1.1	WATERBODIES	10
4.1.2	PEATLAND	10
4.1.3	GRASSLAND	10
4.1.4	WOODLAND	11
4.1.5	SPECIES	11
4.1.6	CONSERVATION MANAGEMENT OBJECTIVES FOR EUROPEAN SITES – GENERAL OVERVIEW	11
<u>5</u>	<u>LIKELY SIGNIFICANT EFFECTS TO EUROPEAN SITES</u>	<u>14</u>
5.1	SCREENING OF ELEMENTS OF THE LECP FOR LIKELY SIGNIFICANT EFFECTS	14
	TABLE 5.1: SCREENING OF ELEMENTS OF THE PROPOSED HIGH LEVEL OBJECTIVES	16
<u>6</u>	<u>IN-COMBINATION EFFECTS</u>	<u>37</u>
6.1	IN-COMBINATION EFFECTS WITH OTHER PLANS	37
6.2	IN-COMBINATION EFFECTS OF THE LECP HIGH-LEVEL GOALS	38
<u>7</u>	<u>SCREENING CONCLUSION</u>	<u>38</u>

1 Introduction

Minogue & Associates and Doherty Environmental have been appointed by Clare County Council to undertake a Strategic Environmental Assessment and Habitats Directive Assessment of the Local Economic and Community Plan (LECP).

This Habitats Directive Assessment (HDA): Stage 1 Screening has been undertaken in conjunction with the Strategic Environmental Assessment (SEA) of the LECP and should be read in combination with the LECP and associated SEA Screening Report.

The purpose of this Screening exercise is to assess whether the Clare LECP has the potential to result in likely significant effects to the integrity and conservation status of European Sites.

1.1 Habitats Directive Assessment

The Habitats Directive Assessment is an assessment of the potential effects of a land use plan or project on one or more Natura 2000 (N2K) Sites. It is noted that a Habitats Directive Assessment is commonly referred to as an “Appropriate Assessment” (Dodd *et al*, 2007). However “Appropriate Assessment” forms only one stage of the HDA process (all stages making up the assessment process are outlined in detail below). The EU Habitats Directive provides the legislative framework for the protection of habitats and species throughout Europe through the establishment of a network of designated conservation areas known as the N2K network. The N2K network includes sites designated as Special Areas of Conservation (SACs), under the EU Habitats Directive and Special Protection Areas (SPAs) designated under the EU Birds Directive. SACs are designated in areas that support habitats listed on Annex I and/or species listed on Annex II of the Habitats Directive. SPAs are designated in areas that support: 1% or more of the all-Ireland population of bird species listed on Annex I of the EU Birds Directive; 1% or more of the population of a migratory species; and more than 20,000 waterfowl.

Articles 6(1) & (2) of the Habitats Directive set out provisions for the conservation management of European Sites. Articles 6(3) and 6(4) of this Directive set out a series of procedural steps to test whether or not a plan or project is likely to affect an N2K site. Article 6(3) also establishes the requirement for a HDA:

“any plan or project not directly connected with or necessary to the management of the (Natura 2000) site but likely to have a significant effect thereon, either individually or in combination with other plans and projects, shall be subjected to appropriate assessment of its implications for the site in view of the site’s conservation objectives. In light of the conclusions of the assessment of the implication for the site and subject to the provisions of paragraph 4, the competent national authorities shall agree to the plan or project only after having ascertained that it will not affect the integrity of the site concerned and, if appropriate, after having obtained the opinion of the general public”.

Therefore, the objective of this HDA is to assess and conclude whether or not the proposed LECP will adversely affect the integrity of European Sites. Such a conclusion will be arrived at by assessing the

implications of the draft LECP for each European Site’s conservation objectives and associated qualifying features of interests (i.e. those Annex I habitats and Annex II species of SACs and Special Conservation Interests (SCIs) of SPAs).

2 Screening Methodology

2.1 Introduction

The function of the Screening Assessment is to identify whether or not the HLGOA of the LECP will have a likely significant effect on European Sites. In this context “likely” means any effect that may be reasonably predicted and “significant” means not trivial or inconsequential but an effect that is potentially relevant to the Site’s conservation objectives¹. Any effect, which would compromise the functioning and viability of a Site and interfere with achieving the conservation objectives of the Site would constitute a significant effect.

The HDA is underpinned by the precautionary principle. Therefore, if the risk of adverse impacts to the conservation objectives of a European Site cannot be ruled out it is assumed that an adverse impact may exist. Where such uncertainties are identified during the assessment, measures will be proposed to avoid or mitigate the risk of adverse impacts occurring.

The HDA was undertaken with reference to the following guidance documents on Habitats Directive Assessments:

- Appropriate Assessment of Plans and Projects in Ireland – Guidance for Planning Authorities (2009). DEHLG.
- Habitats Regulations Appraisal of Plans: Guidance for Plan-making bodies in Scotland (2015).
- Managing Natura 2000 Sites – The provisions of Article 6 of the Habitats directive 92/43/EEC. European commission (2000). (To be referred to as MN 2000).
- Assessment of Plans and Projects Significantly Affecting Natura 2000 sites – Methodological Guidance of the Provisions of Article 6(3) and (4) of the Habitats directive 92/43/EEC. European Commission (2001).
- Guidance on Article 6(4) of the Habitats Directive 92/43/EEC – Clarification of the Concepts of: Alternative Solutions, Imperative reasons of Overriding Public Interest, Compensatory Measures, Overall coherence, Opinion of the Commission. European Commission (2007).
- Appropriate Assessment of Plans. Scott Wilson, Levett-Therivel sustainability Consultants, Treweek Environmental Consultants and Land Use Consultants (2006).

¹ See English Nature’s Habitat Regulations Guidance Note No. 3, 1999.

2.2 Approach to Habitats Directive Screening for Appropriate Assessment

As per the Birds and Natural Habitats Regulations 2011 a Screening for Appropriate Assessment has been undertaken on behalf of Clare County Council to assess the LECPs potential to result in likely significant effects to European Sites.

The European Commission's publication *Assessment of Plans and Projects Significantly Affecting Natura 2000 sites* (2001) provides methodological guidance for Screening for Appropriate Assessment. The guidance publication outlines the stages involved in undertaking a Screening assessment of a plan or project that has the potential to have likely significant effects on European Sites. The methodology adopted for the Screening assessment of this LECP is informed by these guidelines and was undertaken in the following stages:

1. Describe the LECP and determine whether it is necessary for the conservation management of European Sites;
2. List all European Sites occurring within the study area;
3. Assess the goals of the LECP and identify those that could have the potential to result in likely significant effects to European Sites; and
4. Identify other plans or projects that, in combination with the goals LECP, have the potential to affect European Sites.

2.3 Consultation

The LECP will be on public display along with the SEA Screening and this Habitats Directive Assessment. Prescribed environmental authorities will also be provided with these reports and feedback and consultation requested within the prescribed time period.

3 Description of the LECP

3.1 Background to the Socio-Economic Statement & LECP

The Local Government Reform Act 2014 makes legal provision for the reforms set out in the *Government's Action Programme for Effective Local Government, Putting People First*, (October 2012). The Act provides the framework for a more joined-up approach to local and community development programming, which will seek to draw together key local partners to oversee the provision of more effective, efficient and sustainable services for citizens and communities.

As of the 1st June 2014, Regional Authorities in Ireland have been dissolved and are now incorporated into the Regional Assembly structures. The former Mid-West Region consisting of the administrative areas of Clare, Limerick and North Tipperary is now part of the Southern & Eastern Regional Assembly area new regional structures, established on 1st January 2015. As such the Mid-West Regional Planning Guidelines 2010 -2022 will be subject to review to create the new Regional Spatial and Economic

Strategies (RSES). The LECP is required in the first instance to be consistent with these RSES and in future the economic elements of the LECPs will be formulated in accordance with a regional framework set out in the RSES.

Delivery of the strategy and actions “on the ground” will be the role of the relevant public bodies and agencies including the local authority itself, the Local Enterprise Office (LEO), and other relevant national and local bodies including the Limerick and Clare Education and Training Board, TUSLA the Child and Family Agency, the HSE, the Intreo Offices of the Department of Social Protection, as well as non-public agencies including the local development companies, voluntary organisations and community-based organisations across the county.

A key principle underpinning the LECP is sustainability and as stated above, the LECP is required to be consistent with the existing Regional Planning Guidelines 2010-2022 and the Regional Spatial and Economic Strategies (RSESs), to be prepared by the Regional Assemblies, and a new National Planning Framework, to replace the current National Spatial Strategy. With regards to land-use planning the LECP must be consistent with the existing statutory Clare County Development Plan 2011-2017 as varied and “*not present alternate or competing proposals that would lead to inconsistency*”. **Please note the Clare County Development Plan 2017-2023 is currently being prepared and, once adopted, will underpin the LECP for the remaining lifetime of same.**

3.2 The LECP

There are four stages to the preparation of the Plan, of which this AA Screening Report relates to stage 4, the finalisation of the Plan. Previous stages in the plan preparation were also subject to screening under Article 6 of the EU Habitats Directive and SEA screening under the SEA Directive.

Some minor changes have been made to the LECP, as follows:

- Changes to some the text of the existing High Level Goals, Actions and Objectives.
- Section 9 Consistency of LECP and Proofing, and
- Section 10 Monitoring Review and Evaluation.

The Themes of the High Level Goals and Actions have been subject to minor amendments or additional actions, particularly under the Quality of Life, Health and Wellbeing theme. The overall themes however remain as per the previous version, as follows:

- Economic development, employment and enterprise
- Quality of life, health and well being
- Education and training
- Research and development, and
- Climate change and energy.

Section 9 of the LECP presents the consistency of the LECP with required statutory documents including relevant policies/objectives of the Draft CDP 2017-2023. Section 10 presents the monitoring regime for the lifetime of the LECP. As Sections 9 and 10 do not relate to actions or objectives, they are not included in the detailed screening assessment, as they do not contain elements that could potentially give rise to significant effects on European Sites.

4 European Sites

4.1 Overview of European Sites

As the proposed LECP applies to County of Clare, the total county forms the basis for the study area. However a precautionary approach has been taken to this assessment and in line with current guidance on Habitats Directive Assessments, all European Sites occurring within Clare and within a 15km radius of Clare were included. Hence the study area includes all European Sites occurring within a 15km radius of Clare County. Table 4.1 lists all European Sites occurring within the study area, along with the dominant habitat features and/or species characteristics. These characteristics are important in establishing whether or not each site occurs within the sphere of influence of any physical/land use policies outlined in the LECP and whether it is likely to be vulnerable to any potential effects arising from the implementation of such policies. Figure 4.1 and 4.2 show the location of each of these European Sites within the study area.

Table 4.1: European Sites occurring within the Study Area

Site Name	Distance from Clare (in M)	Dominant Habitat Features	Qualifying Species: Mobile or Sedentary
Ballyallia Lake SAC	In Clare	Waterbody	Na
Ballycullinan Lake SAC	In Clare	Waterbody, Limestone Pavement	Na
Ballyogan Lough SAC	In Clare	Waterbody	Na
Black Head-Poulsallagh Complex SAC	In Clare	Coastal, grassland, limestone pavement	Sedentary
Danes Hole, Poulnalecka SAC	In Clare	Woodland, caves	Mobile
Dromore Woods And Loughs SAC	In Clare	Waterbody & Woodland	Mobile
Inagh River Estuary SAC	In Clare	Waterbody	Na
Pouladatig Cave SAC	In Clare	Cave	Mobile
Lough Gash Turlough SAC	In Clare	Waterbody	Na
Moneen Mountain SAC	In Clare	Waterbody, peatland, grassland, limestone pavement	Mobile
Moyree River System SAC	In Clare	Waterbody	Mobile
Poulnagordon Cave (Quin) SAC	In Clare	Cave	Mobile
Galway Bay Complex SAC	In Clare	Coastal	Mobile
Loughatorick South Bog SAC	In Clare	Peatland	Na
Ballyteige (Clare) SAC	In Clare	Peatland	Na
Ballyvaughan Turlough SAC	In Clare	Waterbody	Na

Site Name	Distance from Clare (in M)	Dominant Habitat Features	Qualifying Species: Mobile or Sedentary
Glenomra Wood SAC	In Clare	Woodland	Na
Carrowmore Point To Spanish Point And Islands SAC	In Clare	Coastal	Na
Termon Lough SAC	In Clare	Waterbody	Na
East Burren Complex SAC	In Clare	Waterbody, peatland, grassland, caves	Mobile
Old Domestic Building (Keevagh) SAC	In Clare	Structure	Mobile
Newhall And Edenvale Complex SAC	In Clare	Structure	Mobile
Pollagoona Bog SAC	In Clare	Peatland	Na
Newgrove House SAC	In Clare	Structure	Mobile
Lower River Shannon SAC	In Clare	Waterbody	Mobile
Old Farm Buildings, Ballymacrogan SAC	In Clare	Structure	Mobile
Ballycullinan, Old Domestic Building SAC	In Clare	Structure	Mobile
Toonagh Estate SAC	In Clare	Structure	Mobile
Carrowmore Dunes SAC	In Clare	Coastal	Sedentary
Kilkee Reefs SAC	In Clare	Coastal	Na
Slieve Bernagh Bog SAC	In Clare	Peatland	Na
Old Domestic Buildings, Rylane SAC	In Clare	Structure	Mobile
Ratty River Cave SAC	In Clare	Cave	Na
Knockanira House SAC	In Clare	Structure	Mobile
Kilkishen House SAC	In Clare	Structure	Mobile
Tullaheer Lough And Bog SAC	In Clare	Waterbody	Na
Ardrahan Grassland SAC	10150	Grassland	Na
Askeaton Fen Complex SAC	4380	Peatland	Na
Ballinduff Turlough SAC	7674	Waterbody	Na
Barrigone SAC	4916	Grassland	Mobile
Barroughter Bog SAC	9316	Peatland	Na
Caherglassaun Turlough SAC	2664	Waterbody	Mobiles
Cahermore Turlough SAC	5532	Waterbody	Na
Carrowbaun, Newhall And Ballylee Turloughs SAC	8180	Waterbody	Na
Castletaylor Complex SAC	13105	Waterbody, Peatland, Grassland, Limestone Pavement	
Clare Glen SAC	7565	Woodland	Sedentary
Cloonmoylan Bog SAC	5971	Peatland	Na
Connemara Bog Complex SAC	11859	Peatland	Mobile, sedentary
Coole-Garryland Complex SAC	982	Waterbody	Mobile
Cregg House Stables, Crusheen SAC	208	Structure	Mobile
Curraghchase Woods SAC	6285	Woodland	Mobile
Derrycrag Wood Nature Reserve SAC	4918	Woodland	Na
Drummin Wood SAC	1492	Woodland	Na
Glenstal Wood SAC	9515	Woodland	Sedentary
Gortacarnaun Wood SAC	244	Woodland	Na
Inisheer Island SAC	7354	Limestone Pavement	Na

Site Name	Distance from Clare (in M)	Dominant Habitat Features	Qualifying Species: Mobile or Sedentary
Inishmaan Island SAC	12583	Coastal	Na
Keeper Hill SAC	11367	Peatland	Na
Kerry Head Shoal SAC	7774	Coastal	Na
Kiltartan Cave (Coole) SAC	6231	Cave	Mobile
Kiltiernan Turlough SAC	10813	Waterbody	Na
Lough Corrib SAC	11307	Waterbody	Mobile
Lough Coy SAC	9101	Waterbody	Na
Lough Cutra SAC	2885	Waterbody	Mobile
Lough Fingall Complex SAC	6861	Waterbody	Mobile
Moanveanlough Bog SAC	13927	Peatland	Na
Peterswell Turlough SAC	10029	Waterbody	Na
Pollnacknockaun Wood Nature Reserve SAC	7277	Woodland	Na
River Shannon Callows SAC	12974	Waterbody	Na
Rosturra Wood SAC	7803	Woodland	Na
Silvermine Mountains SAC	13953	Peatland	Na
Silvermines Mountains West SAC	8801	Peatland	Na
Sonnagh Bog SAC	7835	Peatland	Na
Tory Hill SAC	14014	Grassland	Na
Cliffs of Moher SPA	In Clare	Coastal	Mobile
Inner Galway Bay SPA	In Clare	Coastal	Mobile
Ballyallia Lough SPA	In Clare	Waterbody	Mobile
Lough Derg (Shannon) SPA	In Clare	Waterbody	Mobile
River Shannon and River Fergus Estuaries SPA	In Clare	Waterbody	Mobile
Illeunonearaun SPA	In Clare	Coastal	Mobile
Loop Head SPA	In Clare	Coastal	Mobile
Slieve Aughty Mountains SPA	In Clare	Peatland	Mobile
Mid-Clare Coast SPA	In Clare	Coastal	Mobile
Corofin Wetlands SPA	In Clare	Waterbody	Mobile
Lough Corrib SPA	14724	Waterbody	Mobile
Lough Cutra SPA	2911	Waterbody	Mobile
Middle Shannon Callows SPA	12946	Waterbody	Mobile
Coole-Garryland SPA	982	Waterbody	Mobile
Cregganna Marsh SPA	12195	Waterbody	Mobile
Stack's to Mullaghareirk Mountains, West Limerick Hills and Mount Eagle SPA	3906	Peatland	Mobile
Slievefelim to Silvermines Mountains SPA	7272	Peatland	Mobile
Connemara Bog Complex SPA	13533	Peatland	Mobile
Kerry Head SPA	11124	Coastal	Mobile

Figure 4.1: SACs within County Clare and the surrounding 15km buffer

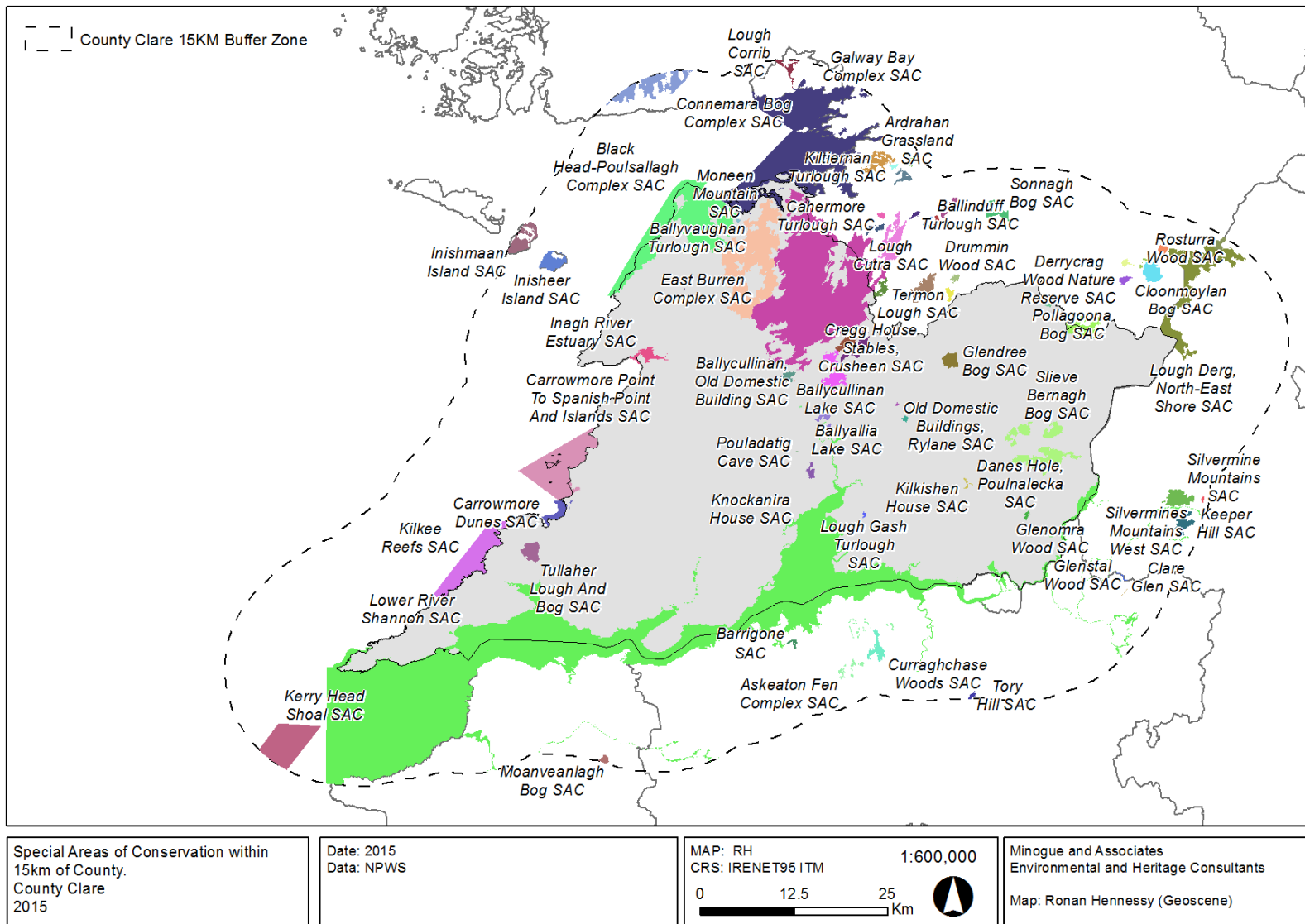
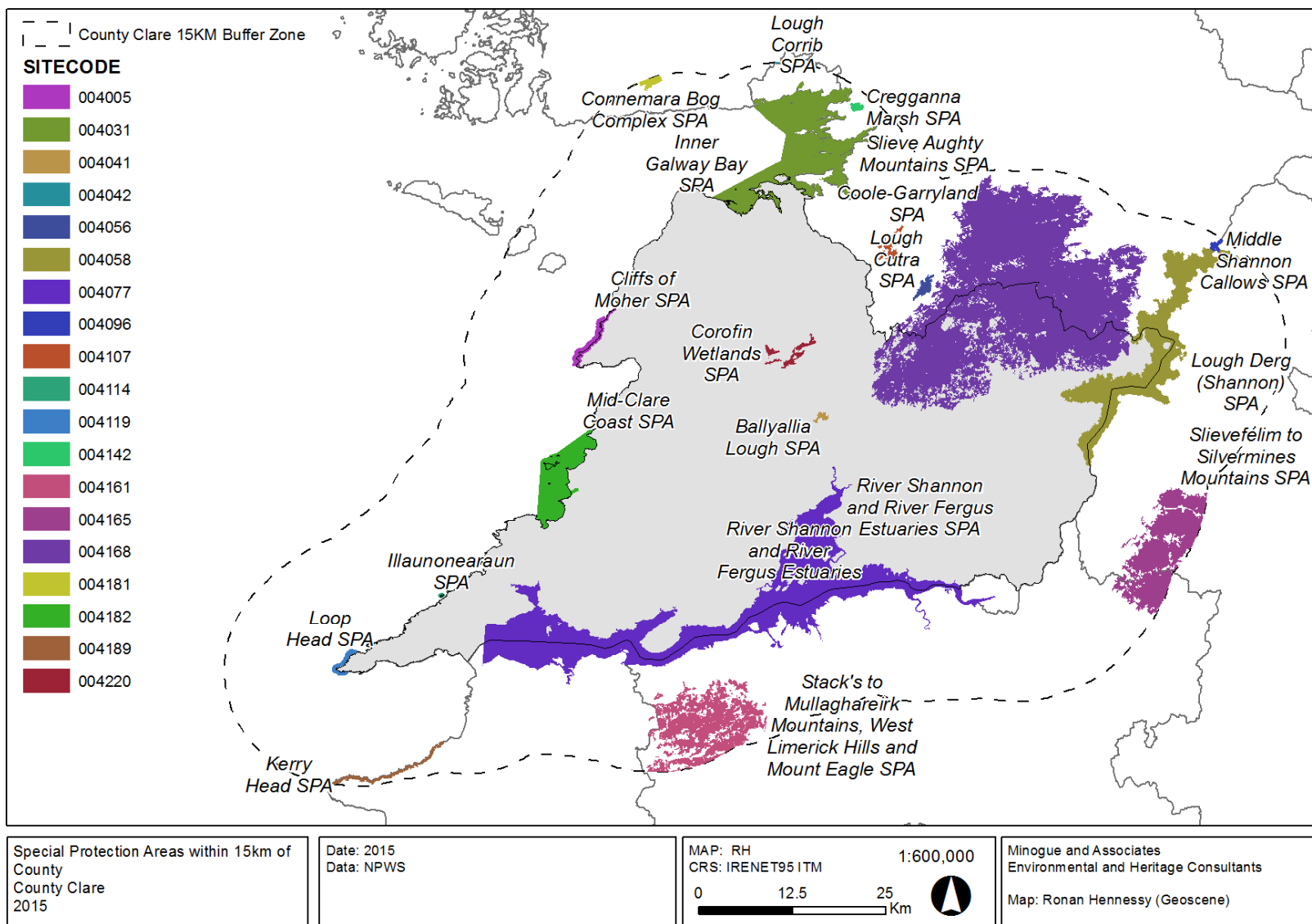


Figure 4.2: SPAs within County Clare and the surrounding 15km buffer



A total of 94 European Sites occur within the study area. As can be seen from Table 4.1 the dominant broad habitat characterising European Sites occurring within the study area is waterbodies. Other dominant habitat characteristics include peatland, woodland, grassland, limestone pavement and caves.

With regard to species all SPAs support mobile bird species. Species are included as qualifying features of interest for 51 SACs occurring in the study area, 47 of which support mobile species and four of which support sedentary species. The dominant mobile species occurring in the study area is lesser horseshoe bats, followed by otter and freshwater aquatic species. Sedentary species consist of invertebrates and plants species.

The following sub-section provides a brief overview of the main sensitivities and pressure to habitat and species characteristics influencing European Sites.

4.1.1 **Waterbodies**

Waterbodies are particularly sensitive to changes in the hydrological regime and water quality. The main pressures affecting these habitats include instream river maintenance operations such as flood relief schemes and bridge construction, the influx of contaminated surface water from terrestrial activities, abstractions leading to changes in the hydrological regime and the spread of invasive species. Lakes are particularly sensitive to the spread of invasive species.

4.1.2 **Peatland**

Peatlands are particularly sensitive to changes in their hydrological regime. Peatland habitats rely on a high water table along with undisturbed and intact peat-forming surface vegetation. Overgrazing can result in a loss of typically peat-forming vegetation leading to a change in vegetation composition which can in turn undermine the active status of bog habitats. Peat extraction and drainage also undermine the intact nature of bog habitats necessary for peat accretion. Such practices will disrupt the hydrological regime of bog habitats leading to drying out of the surface bog and eventual degradation and erosion. Other pressures to peatland habitats include forestry and wind energy developments and recreational activities.

4.1.3 **Grassland**

Seven European Sites are designated for the presence of semi-natural orchid-rich grasslands. These grassland habitats are sensitive to changes in grazing and management practices.

One European Site is designated for the presence of *Nardus* grassland. This habitat occurs in upland areas, usually in association with peatlands. It is sensitive to over-grazing and changes in landuse practices.

4.1.4 Woodland

Three European Sites are designated for the presence of woodland habitats. Wet alluvial woodland are dependent on surface and groundwater influences and are sensitive to changes in the hydrological regime that can result from drainage activities. They are also sensitive to inappropriate grazing regimes.

Drier oak and yew woodlands are sensitive to inappropriate grazing pressure and the spread of invasive species.

4.1.5 Species

Aquatic fauna are sensitive to the same pressures outlined for waterbodies in Section 4.1.2 above. The marsh fritillary butterfly is also included as a mobile species. This species is sensitive to changes in grazing and land management practices. Improvements of semi-natural grasslands resulting in the loss of swards supporting the marsh fritillary larvae foodplant the devil's-bit scabious is known to have caused a decline in this species throughout Europe.

Birds species listed as species conservation interests for SPAs include waterbirds and raptors. Waterbirds are reliant on wetland habitats dominated by peatland and waterbodies. Bird species associated with such sites are sensitive to the pressures outlined in Section 4.1.1 and 4.1.3 above. In addition these species are sensitive to effects outside the boundaries of SPAs from development due to collision and/or disturbance.

The SPAs designated for raptors list hen harrier and merlin as the SCIs. Both species are sensitive to habitat change and disturbance. Recreational pressure and wind energy developments can result in displacement of these species resulting in a loss of suitable habitat.

Sedentary species include pearl mussels and Killarney fern. Pearl mussels are especially sensitive to surface water pollution with diffuse pollution arising from agricultural and forestry activity noted as a particular pressure. Fine sediment infiltration of the river bed substrate is also a main cause of decline for this species arising from a multitude of sources from land improvement and quarrying to drainage works. Modification of watercourse hydrology and water abstraction from both surface and groundwater have also been noted as main threats to this species. Killarney fern is sensitive to inappropriate grazing, disturbance, fire and alien non-native or problematic native species.

4.1.6 Conservation Management Objectives for European Sites – General Overview

In general the aims of Conservation Management Objectives for European Sites is to maintain the favourable conservation status of qualifying features of interest (SACs) and special conservation interests (SPA) and the overall integrity of the site so that it can continue to support these interests.

For the majority of the cSACs occurring within the study area only generic conservation management objectives have been published. The generic Conservation Management Objectives for cSAC occurring within the study area are as follows:

- To maintain the Annex I habitats for which the cSAC has been selected at favourable conservation status;
- To maintain the Annex II species for which the cSAC has been selected at favourable conservation status;
- To maintain the extent, species richness and biodiversity of the entire site; and
- To establish effective liaison and co-operation with landowners, legal users and relevant authorities.

However more detailed information on the Conservation Management Objectives of a number of sites have been published since 2005. The presentation of conservation management objectives has evolved since this time.

Conservation Management Plans were published for a number of sites throughout the country in 2005 and these conservation plans were prepared for a five-year period between 2005 and 2010. In general each plan reiterated the generic conservation objectives for the qualifying habitats and species for which the site had been designated. Additional information, such as ongoing management issues for the SAC is provided in the 2005 – 2010 Conservation Management Plans.

In 2009 Conservation Statements were published for a number of cSACs throughout the country and these followed a similar format to that of the 2005 Conservation Management Plans.

Recently the Department has noted in the Prioritised Action Framework (PAF) for Natura 2000 (NPWS, 2014) that many of the conservation plans completed prior to the current Conservation Objectives series do not conform with the Commission’s definition of a comprehensive management plan.

The current Conservation Objectives Series goes further than the preceding 2005 Plans and 2009 Statements in that it outlines in detail the attributes that underpin favourable conservation status, along with targets and criteria for measuring the conservation status of each attribute. These documents have been prepared in line with the Commissions definition of a comprehensive management plan.

The European Sites for which conservation plans or detailed conservation objectives have been prepared are as follows:

- Lower River Shannon cSAC
- River Shannon and River Fergus Estuaries SPA
- Barrigone
- Clare Glen
- Galway Bay Complex SAC
- Carrowmore Dunes SAC

- Kilkee Reefs SAC
- Inisheer Island SAC
- Inishmaan Island SAC
- Inishmore Island SAC
- Inner Galway Bay SPA
- Mid-Clare Coast SPA

5 Likely Significant Effects to European Sites

5.1 Screening of Elements of the LECP for likely significant effects

This is the final Stage in the LECP preparation. The changes to the High Level Goals, Strategic Objectives and Actions form the basis of this assessment. The high-level goals are presented under themed headlines which are:

1. Economic development, employment and enterprise
2. Quality of life, health and well being
3. Education and training
4. Research and development, and
5. Climate change and energy.

Please note that the High Level Goals, Strategic Objectives and actions were assessed previously under Article 6 of the Habitats Directive, and following consultation there has been some re-phrasing or addition of new actions. Any changes to table below are a result of the consultation undertaken between Stages 3 and 4 of the LECP preparation and are therefore assessed again in the following table. Where text was deleted, the font is shown as ~~strikethrough~~, where new text is shown in ***bold, italic and purple font***.

Therefore each of the high level goals, strategic objectives and actions are now assessed in Table 5.1 for their potential to result in land use activities that could have the potential to result in likely significant effects to European Sites in the study area.

Indicators used to identify potential likely significant effects are based on indicators outlined in EU Guidelines and are as follow:

- Loss of habitat;
- Habitat fragmentation;
- Disruption or damage to habitats;
- Disturbance to habitats or species that undermines favourable conservation status; and
- Change to key elements that underpin the structure and function of a site.

Each of the High-level Goals, Strategic Objectives and actions are either Screened In or Out of Appropriate Assessment in Table 5.1.

Reasons for Screening In Goals relate to the potential for the Goal to result in likely significant effects to one or more of the European Sites outlined in Section 4 of this Screening Assessment.

Reasons for Screening Out Goals relate to:

- Goals expressing policy indicating the general intention of the Local Authority
- Goals that will not have any potential to result in land use activity.

- Goals that are likely to have land use implications but whose effect on any particular European Site cannot be identified because of the generality of the Goal.

Table 5.1: Screening of Elements of the proposed High Level Objectives

	Text	Assessment	Screened In/Out
Theme: Economic development, employment and enterprise			
High Level Goal	An Economic culture that is pro-enterprise/pro-entrepreneur.	This goal relates to fostering a culture to support entrepreneurs. The growth of whose businesses will not necessarily result in land use activities. This is a general goal with no direct or indirect relationship to European Sites.	Out
Sustainable Economic Development Objectives (SEDO) SEDO	1: Ensure adequate, co-ordinated and monitored delivery of enterprise supports	This objective, in itself, does not relate to land use activities and does not have the potential to effect European Sites.	Out
Strategic Action e.e.1	Establish a structure within the LCDC and the Economic Development & Enterprise SPC to co-ordinate, monitor and proof the delivery of all the Economic Development, Employment and Enterprise, Research and Development, Climate Change and Energy actions in the LECP	This objective, in itself, does not relate to land use activities and does not have the potential to effect European Sites.	Out
High Level Goal:	An Economic market attractive to Investors and Entrepreneurs	This goal is not location specific and is consistent with a number of Objectives in the Clare CDP including 6.1 Employment, Economy and Enterprise Promotion and 6.2 Working in Partnership.	Out
Sustainable Economic Development Objectives (SEDO) SEDO 2	Increase the number of micro-enterprises and related employment in the County	This objective, in itself, does not relate to land use activities and does not have the potential to effect European Sites.	Out
Strategic actions e 2.1	Implement the LEO Action Plan for Enterprise start-ups	This action, in itself, does not relate to land use activities and does not have the potential to effect European Sites	Out
e 2.2	Implement the LDS support programme for micro-enterprise	This action, in itself, does not relate to land use activities and does not have the potential to effect	Out

	Text	Assessment	Screened In/Out
e 2.3	Implement the LDS support programme for tourism enterprise development	European Sites This action, in itself, does not relate to land use activities and does not have the potential to effect European Sites	Out
e 2.4	Promote, support and develop specific locations for smaller scale foreign direct investment through the Connect Ireland initiative	This is a general action, whose implementation will not in itself have the potential to result in likely significant effects to European Sites. Any lower level land use plans or projects facilitated by this action will be required to undergo Habitats Directive Assessment. Also Policy 15.10, 17.3 and 17.4 of the County Development Plan will ensure that such plans or projects are assessed in line with the requirements of the Habitats Directive	Out
e 2.5	Support the development of the food sector i.e. development of a food brand and food enterprises	This action, in itself, does not relate to land use activities and does not have the potential to effect European Sites	Out
e 2.6	Support the development of existing enterprise centres and incubation space for micro-enterprises	This action relates to existing land use activities in areas already zoned under the CDP and does not have the potential to effect European Sites.	Out
e2.7	Develop and implement a pro-active tourism strategy for the county which is linked to internationally focussed tourism propositions such as the Wild Atlantic Way and the Lakelands and more local specific themes	CDP 12.1 and 12.2 are related to this action which relates only to the development of such a strategy. The action, in itself, does not relate to land use activities and does not have the potential to effect European sites..	Out
e-2.8	Promote and support the development of social enterprises	This action, in itself, does not relate to land use activities and does not have the potential to effect European Sites	Out
High Level Goal	An Economic market attractive to Investors and Entrepreneurs	This high level goal is not location specific and is consistent with a number of Objectives in the Clare CDP including: Goal V and CDP 6.1 Employment, Economy and Enterprise Promotion	Out

	Text	Assessment	Screened In/Out
SEDO 3	Increase the number of small (10-50 employees) and medium (50-250 employees) enterprises	This objective, in itself, does not relate to land use activities and does not have the potential to effect European Sites.	Out
e 3.1	Deliver mentoring, management and marketing programmes to High Potential Start-Ups	This action, in itself, does not relate to land use activities and does not have the potential to effect European Sites.	Out
e3.2	Deliver supports to businesses operating in the domestic market who are in the expansion phase of their businesses	This action, in itself, does not relate to land use activities and does not have the potential to effect European Sites.	Out
e3.3	Support businesses that do not qualify <i>for capital grant aid</i> under current programmes	This action, in itself, does not relate to land use activities and does not have the potential to effect European Sites.	Out
High Level Goal	An Economic market attractive to Investors and Entrepreneurs	This goal, in itself, does not relate to land use activities and does not have the potential to effect European Sites.	Out
SEDO 4:	Attract Foreign Direct Investment and large enterprises	This objective, in itself, does not relate to land use activities and does not have the potential to effect European Sites.	Out
e 4.1	Promote the economic comparative advantage of locating in County Clare	This action, in itself, does not relate to land use activities and does not have the potential to effect European Sites.	Out
e 4.2	Develop a business case for investing in County Clare	This action, in itself, does not relate to land use activities and does not have the potential to effect European Sites.	
e 4.3	Attract EU investment to the County (e.g. Urban Development Fund) for major projects including the Clare County Library, remodelling of town centre schemes etc	<p>This action, in itself, does not relate to land use activities and does not have the potential to effect European Sites.</p> <p>Any lower level land use plans or projects facilitated by this goal will be required to undergo Habitats Directive Assessment.</p> <p>Also Policy 15.10, 17.3 and 17.4 of the County Development Plan will ensure that such plans or projects are assessed in line with the requirements of the Habitats Directive.</p>	Out

	Text	Assessment	Screened In/Out
e 4.4	Promote Clare as a low carbon economy as a means of attracting inward investment	This action, in itself, does not relate to land use activities and does not have the potential to effect European Sites.	Out
High Level Goal	An Economy offering world-class, highly-skilled and flexible labour force	This goal, in itself, does not relate to land use activities and does not have the potential to effect European Sites.	Out
SEDO 5	Increase the number, skills and educational qualifications of the employed Increase the skills and educational qualifications of the people of the County	This objective, in itself, does not relate to land use activities and does not have the potential to effect European Sites.	Out
e 5.1	Increase third level participation rates particularly in the mathematical based disciplines (e.g. accounting, engineering, ICT etc) in STEM subjects (Science, Technology, Engineering and Mathematics)	This action, in itself, does not relate to land use activities and does not have the potential to effect European Sites.	Out
e 5.2	Increase fourth level achievement rates	This action, in itself, does not relate to land use activities and does not have the potential to effect European Sites.	Out
e 5.3	Develop apprenticeship programmes relevant to the needs of businesses and the skills of the labour force	This action, in itself, does not relate to land use activities and does not have the potential to effect European Sites.	Out
e 5.4	Deliver programmes for continual development in business, organisation management., professions and skills	This action, in itself, does not relate to land use activities and does not have the potential to effect European Sites.	Out
e 5.5	Provide the county's adult population with the relevant education and training to enable them to compete for job opportunities as they arise	This action, in itself, does not relate to land use activities and does not have the potential to effect European Sites.	Out
High Level Goal 4:	An Economy, whose resource base offers economic/comparative advantage.	This goal, in itself, does not relate to land use activities and does not have the potential to effect European Sites.	Out

	Text	Assessment	Screened In/Out
SEDO 6	Increase the role of towns and villages as rural economic hubs Increase the population and skills profile of towns and villages with population less than 1,000 so that they can act more effectively as rural economic hub	This is a general action, whose implementation will not in itself have the potential to result in likely significant effects to European sites. Any lower level land use plans or projects facilitated by this action will be required to under Habitats Directive Assessment. Also Policy 15.10, 17.3 and 17.4 of the CDP will ensure that such plans or projects are assessed in line with the requirements of the Habitats Directive.	Out
e 6.1	Undertake a socio-economic analysis of a number of the county's towns and villages with a view to preparing a plan to identify their potential for improved quality of life and advancing rural economic regeneration and prepare a plan to improve their quality of life and their ability to act as catalysts for the economic regeneration of their rural hinterland	This action, in itself, does not relate to land use activities and does not have the potential to effect European Sites.	Out
Theme: Quality of Life, Health and Well being.			
High level goal	A Society that is Inclusive and cherishes People's Health, Participation and Solidarity	This is a general goal, whose implementation will not in itself have the potential to result in likely significant effects to European Sites.	Out
SCO1	Ensure adequate, co-ordinated, proofed, monitored and delivery of social inclusion supports Ensure adequate benchmarking data and adequate co-ordinated, proofed, monitored delivery of social inclusion supports.	This objective, in itself, does not relate to land use activities and does not have the potential to effect European Sites.	Out
q 1.1	Establish a structure within the LCDC and the Economic & Enterprise SPC to co-ordinate, monitor and proof the delivery of all the Quality of Life, Health & Wellbeing, Education &	This action, in itself, does not relate to land use activities and does not have the potential to effect European Sites.	Out

	Text	Assessment	Screened In/Out
High Level Goal 5	Training actions A Society that is Inclusive and cherishes People’s Health, Participation and Solidarity	This is a general goal, whose implementation will not in itself have the potential to result in likely significant effects to European Sites.	Out
Sustainable Economic Development Objectives (SEDO) SCO 2	Reduce the number of Small Areas (CSO definition) that are ‘deprived’ or ‘very deprived’ and reduce the number of individuals ‘at risk of poverty’ or experiencing ‘basic deprivation’ Reduce the number of ‘Deprived’ and ‘Very Deprived’ Small Areas (Haase-Pratschke Index definition) Reduce the number of individuals experiencing ‘Consistent Poverty’ (both ‘At risk of ‘Poverty’ or experiencing ‘Basic Deprivation’) Reduce the number of ‘Jobless Households’ and the number of ‘Jobless Households with a Child’	This objective, in itself, does not relate to land use activities and does not have the potential to effect European Sites.	Out
q 2.1	Implement all local and community development programmes and services in the County for the benefit of those ‘at risk’ of poverty and/or experiencing ‘basic deprivation’ and/or living in ‘deprived communities’ having regard to gender equality e.g. LDS, SICAP, County Childcare Strategy, Sports Partnership Strategic Plan, Clare Youth Strategy, Intreo, LCETB Strategic Framework 2015-2020 Implement local and community development programmes/services in the County for the benefit of those living in ‘deprived	This action, in itself, does not relate to land use activities and does not have the potential to effect European Sites. No direct or indirect relationship between the implementation of this action and European Sites can be identified at this stage.	Out

	Text	Assessment	Screened In/Out
	<i>communities' or who are members of disadvantaged communities or are 'at risk' of poverty and/or experiencing 'basic deprivation' having regard to Equality and Diversity e.g. LDS, SICAP, County Childcare Strategy, Sports Partnership Strategic Plan, Clare Youth Strategy, Intreo, LCETB Strategic Framework, FRCs, Clare Womens Network'</i>		
q 2.2	Deliver RAPID type interventions where deprived small areas are clustered	This action, in itself, does not relate to land use activities and does not have the potential to effect European Sites.	Out
High Level Goal 5	A Society that is Inclusive and cherishes People's Health, Participation and Solidarity	This is a general policy, whose implementation will not in itself have the potential to result in likely significant effects to European Sites.	Out
Sustainable Economic Development Objectives (SEDO)	SCO 3: Reduce unemployment levels in the County	This objective, in itself, does not relate to land use activities and does not have the potential to effect European Sites.	Out
q 3.1	Pursue labour market activation programmes that benefit the unemployed	This action, in itself, does not relate to land use activities and does not have the potential to effect European Sites.	Out
q 3.2	Increase qualifications and skills of the unemployed especially the long-term unemployed and young people (18-24) not in employment, education or training	This action, in itself, does not relate to land use activities and does not have the potential to effect European Sites.	Out
q 3.3	Engage long-term unemployed men with in structures where they are comfortable (e.g. Men's Shed Programmes etc) Support county-level Network of Men's Sheds and Network of Women's Groups. Support the engagement of Long-term	This action, in itself, does not relate to land use activities and does not have the potential to effect European Sites.	Out

	Text	Assessment	Screened In/Out
q3.4	<i>unemployed men and women on Labour Market Activation Programs within structures where they are comfortable</i>		
	<i>Reduce intergenerational, long-term unemployment</i>	This action, in itself, does not relate to land use activities and does not have the potential to effect European Sites.	
High Level Goal 5	A Society that is Inclusive and cherishes People's Health, Participation and Solidarity	This is a general goal, whose implementation will not in itself have the potential to result in likely significant effects to European Sites.	Out
Sustainable Community Objectives (SCO) SCO4:	Improve the well-being and quality of life for vulnerable communities, families, youth, children and individuals in the county (i.e. people who are vulnerable to unemployment, psychological distress, social and physical isolation, neglect and abuse) <i>of the people of the county, especially those who are most vulnerable.</i>	This objective, in itself, does not relate to land use activities and does not have the potential to effect European Sites.	Out
q4.1	<i>Undertake a longitudinal study of the County's Health, Well-Being and Quality of Life</i>	This action, in itself, does not relate to land use activities and does not have the potential to effect European Sites.	Out
q 4.2	Support older people to continue living as valued members of the community, recognising their contribution and heeding their particular needs	This action, in itself, does not relate to land use activities and does not have the potential to effect European Sites.	Out
q 4.2	Support initiatives that foster positive mental health and physical health of the people of the County	This action, in itself, does not relate to land use activities and does not have the potential to effect European Sites.	Out
Q4.3	<i>Support young people (<18 yrs.) and young adults (18-25 yrs.) in the county to live as valued members of the community, recognising their contribution, heeding their</i>	This action, in itself, does not relate to land use activities and does not have the potential to effect European Sites.	Out

	Text	Assessment	Screened In/Out
	<i>particular needs and supporting their right to have a say in decisions which affect them.</i>		
Q4.4	<i>Support youth projects, groups and clubs to continue to offer information and educational opportunities for young people and young adults on a countywide basis</i>	This action, in itself, does not relate to land use activities and does not have the potential to effect European Sites.	Out
q 4.5	<i>Support initiatives that foster positive mental health of the people of the County</i>	This action, in itself, does not relate to land use activities and does not have the potential to effect European Sites.	Out
q 4.6	<i>Support inter-agency co-ordination and collaboration to achieve best outcomes for all Children and Young People</i>	This action, in itself, does not relate to land use activities and does not have the potential to effect European Sites.	Out
q 4.6	<i>Support inter-agency co-ordination and collaboration to achieve best outcomes for all Children and Young People</i>	This action, in itself, does not relate to land use activities and does not have the potential to effect European Sites.	Out
q4.7	<i>Support the improvement of the Health and Wellbeing of the population of the County.</i>	This action, in itself, does not relate to land use activities and does not have the potential to effect European Sites.	Out
q 4.8	<i>Support vulnerable adults.</i>	This action, in itself, does not relate to land use activities and does not have the potential to effect European Sites.	Out
q 4.9	<i>Support the provision of and access to community-based mental health and the recovery of people who experience mental health difficulties and their families</i>	This action, in itself, does not relate to land use activities and does not have the potential to effect European Sites.	Out
Q4.10	<i>Support people who experience difficulty in returning to the labour force</i>	This action, in itself, does not relate to land use activities and does not have the potential to effect European Sites.	Out
Q4.11	<i>Support people whose employment is vulnerable</i>	This action, in itself, does not relate to land use activities and does not have the potential to effect European Sites.	

	Text	Assessment	Screened In/Out
Q4.12	Support people who are living in remote locations of the county/isolated circumstances	This action, in itself, does not relate to land use activities and does not have the potential to effect European Sites.	Out
Q4.13	Develop specific supports for children (12-18 yrs.) who are 'at risk of' or have been cautioned by the Juvenile Liaison Officer (JLO)	This action, in itself, does not relate to land use activities and does not have the potential to effect European Sites.	Out
Q4.14	Support the reduction of re-offending and the promotion of community re-integration amongst young people (< 18 yrs) and young adults (18-24) who have been referred by the courts for either probation or community service	This action, in itself, does not relate to land use activities and does not have the potential to effect European Sites.	Out
Q4.15	Address the collective disadvantage of people with Disabilities, People from the Lesbian, Gay, Bisexual and Transgender (LGBT) Communities, People who are Lone Parents, People from the Traveller Community, People from the Roma Community and People from the New Communities	This action, in itself, does not relate to land use activities and does not have the potential to effect European Sites.	Out
Q4.16	<i>Support the provision of and access to community-based mental health supports and facilities</i>		
Q4.17	<i>Support people whose employment is vulnerable or who experience difficulty in returning to the workforce</i>		
Q4.18	<i>Ensure that the Local Development Strategy reflects the identified needs of the county</i>		
Q4.19	<i>Support the development of a countywide programme of youth activities and infrastructure (e.g.</i>		

	Text	Assessment	Screened In/Out
High Level Goal 6	Youth Clubs/Hang-outs A Society where People, Neighbourhoods and Communities are Safe and Secure and Active .	This is a general goal, whose implementation will not in itself have the potential to result in likely significant effects to European Sites	Out
Strategic Actions SCO 5	Create a safe and secure physical and social environment for the people of the county Create a Quality Community and Social environment where people are safe, secure and active both physically and socially	This objective, in itself, does not relate to land use activities and does not have the potential to effect European Sites.	Out
q 5.1	Support the work of the Joint Policing Committee in preventing crime, protecting vulnerable members of the community and addressing anti-social behaviour	This action, in itself, does not relate to land use activities and does not have the potential to effect European Sites.	Out
q 5.2	Support community initiatives to prevent crime and to achieve a sense of social security and personal safety.	This action, in itself, does not relate to land use activities and does not have the potential to effect European Sites.	Out
Q5.3	Support the provision of recreational/health/ sporting/social inclusion activities	This action, in itself, does not relate to land use activities and does not have the potential to effect European Sites	Out
Q5.4	Support volunteering, volunteers and their infrastructural needs	This action, in itself, does not relate to land use activities and does not have the potential to effect European Sites	Out
High Level Goal 7:	A Society that is Socially and Physically Connected	This goal is supported throughout the Clare CDP for example through objectives contained in Chapters Five and 13 of the plan. This is a general goal, whose implementation will not in itself have the potential to result in likely significant effects to European Sites	Out
Sustainable Economic Development Objectives (SEDO) SCO 6:	Increase ICT, Transport and Social Infrastructure provision the provision of infrastructure for environmental, social, transport and ICT needs Increase ICT, Transport and Social Infrastructure provision	While this objective is likely to have the potential to result in land use activities or change its relevance to European Sites or qualifying features cannot be identified at this stage due to the general nature of the objective.	Out

	Text	Assessment	Screened In/Out
q 6.1		<p>Furthermore it is noted that the environmental safeguards of the County Development Plan will ensure that any lower-level plans or projects supported by this goal will only be permitted where they meet the requirements of the Habitats Directive.</p> <p>CDP Objectives of particular relevance to such plans or projects include 15.10, 17.3, 17.4, 17.9 and 17.19.</p> <p>Furthermore Appendix 3 of the Clare County Development Plan NIR will also apply to any future projects supported under this objective..</p>	
	<i>Pilot group broadband schemes in black spots.</i>	<p>This action is supported throughout the Clare CDP for example through objectives contained in Chapters Five and 13 of the plan. This is a general goal, whose implementation will not in itself have the potential to result in likely significant effects to European Sites.</p>	Out
q6.2	Support the implementation of plans to that enhance the county's physical connectivity e.g. Limerick Northern Distributor Road, Shannon Crossing at Ballina/Killaloe	<p>Furthermore it is noted that the environmental safeguards of the County Development Plan will ensure that any lower-level plans or projects supported by this action will only be permitted where they meet the requirements of the Habitats Directive.</p> <p>Objective 11.7 of the CDP supports these particular proposals; it is also noted that the environmental safeguards of the County Development Plan will ensure that any lower-level plans or projects supported by this action will only be permitted where they meet the requirements of the Habitats Directive.</p> <p>CDP Objectives of particular relevance to such plans or projects include 15.10, 17.3, 17.4, 17.9 and 17.19.</p> <p>Furthermore Appendix 3 of the Clare County Development Plan NIR will also apply to any future</p>	Out

	Text	Assessment	Screened In/Out
q 6.3	Support sustainable transport initiatives in the County that complement existing public and private transport services and the provision of associated infrastructure including stops, shelters and service and timetable information	road projects supported under this goal. This is a general action, whose implementation will not in itself have the potential to result in likely significant effects to European Sites. It is also noted that this action is supported through CDP Objective 11.4.	Out
q 6.4	Support volunteering, volunteers and their infrastructural needs as well as employment outcomes Support the enhancements of community facilities and extend the range of usage	It is noted that the environmental safeguards of the County Development Plan will ensure that any lower-level plans or projects supported by this action will only be permitted where they meet the requirements of the Habitats Directive.	Out
Q6.4	Support the provision of communities' sporting and physical facilities and activities.		
q 6.5	Support the implementation of plans that enhance the environment e.g. the Shannon Green Infrastructure plan	Strategic Aims 17.1 of the CDP support this action. Furthermore it is noted that the environmental safeguards of the County Development Plan will ensure that any lower level plans or projects supported by this goal will only be permitted where they meet the requirements of the Habitats Directive.	Out
High Level Goal:	A Society that is Culturally Rich with Strong Identities	This goal, in itself, does not relate to land use activities and does not have the potential to effect European Sites.	Out
SCO 7:	Strengthen community's identities and the county's cultural and built heritage SCO 7: Strengthen the County's Culture and its Communities' Cultures and related Infrastructure and its Communities' Built Heritage	This objective, in itself, does not relate to land use activities and does not have the potential to effect European Sites. Nevertheless Objectives 17.3, 17.4, 17.19 and 17.20 of the CDP will ensure that should developments be proposed associated with built heritage, such developments will only be undertaken in line with the Habitats Directive.	Out
q 7.1	Support the work of the library	This is a general action, whose implementation will	Out

	Text	Assessment	Screened In/Out
	<i>service by; developing a single central facility for its work; developing a service to support enterprise and the knowledge economy; managing, preserving and making available the local and national culture of the county; enhancing access and social inclusion</i>	not in itself have the potential to result in likely significant effects to European Sites. Furthermore it is noted that the environmental safeguards of the County Development Plan will ensure that any lower-level plans or projects supported by this goal will only be permitted where they meet the requirements of the Habitats Directive.	
q 7.2	Support the growth of community arts and the work of community artists including the provision of related infrastructure <i>Support the growth of the arts in our communities and the work of artists including cultural infrastructure.</i>	See assessment for action 7.1 above.	Out Out
Q7.3	Support place-making initiatives that enhance our towns and villages <i>and rural communities</i> e.g. Ennis 2020 Plan	A number of objectives in the CDP are consistent with this goal, most notably Goal XVIII: A County Clare which promotes and develops all buildings, urban spaces and public realm of the highest quality and ensures all development adheres to the principles of good design and contributes to the establishment of distinctive buildings and areas with a 'sense of place'. The relevance of such development to individual European Sites and qualifying features cannot be identified at this stage. Nevertheless Objectives 17.3, 17.4, 17.19 and 17.20 of the CDP will ensure that such developments will only be undertaken in line with the Habitats Directive.	Out
q 7.4	Develop and protect the county's sites of heritage and historic importance to the benefit of communities and visitors to the	While this action is likely to have the potential to result in land use activities or change its relevance to European Sites or qualifying features cannot be identified at this stage due to the general nature of	Out

	Text	Assessment	Screened In/Out
q 7.4	<p>county e.g. Scattery Island, Holy Island</p> <p>Develop and protect the county's sites of built heritage and historic importance to the benefit of communities and visitors to the county (e.g. Scattery Island, Holy Island) and provide a matched Conservation Grant Scheme between Central Government and Clare County Council.</p>	<p>the objective.</p> <p>Furthermore it is noted that the environmental safeguards of the County Development Plan will ensure that any lower-level plans or projects supported by this goal will only be permitted where they meet the requirements of the Habitats Directive.</p> <p>CDP Objectives of particular relevance to such plans or projects include 15.10, 17.3, 17.4, 17.9 and 17.19.</p> <p>Furthermore Appendix 3 of the Clare County Development Plan NIR will also apply to any future projects supported under this objective..</p>	
	Develop a single central facility for the county's public library and ancillary services	<p>This is a general action, whose implementation will not in itself have the potential to result in likely significant effects to European Sites. Furthermore it is noted that the environmental safeguards of the County Development Plan will ensure that any lower level plans or projects supported by this goal will only be permitted where they meet the requirements of the Habitats Directive.</p>	Out
Theme: Education and Training			
High Level Goal 9	A Learning environment that addresses educational disadvantage and achieves High Educational Participation rates.	This goal, in itself, does not relate to land use activities and does not have the potential to effect European Sites.	Out
SCO 8:	Increase participation and achievement rates at second and third level	This objective, in itself, does not relate to land use activities and does not have the potential to effect European Sites.	Out
t 1.1.	Implement a 'schools completion' type programme in a number of schools where retention is a challenge at primary and secondary level	This action, in itself, does not relate to land use activities and does not have the potential to effect European Sites.	Out
t 1.2	Implement a range of post secondary	This action, in itself, does not relate to land use	Out

	Text	Assessment	Screened In/Out
t 1.3	and third level access programmes Support the mental health of the county's young people thus helping them to remain in and progress through the education system Support the mental wellbeing (healthier life) of the county's young people (12 to 18) which, in addition, will help them to remain in and progress through the education system	activities and does not have the potential to effect European Sites. This action, in itself, does not relate to land use activities and does not have the potential to effect European Sites.	Out
t 1.4	Provide targeted educational and developmental interventions to children and young people in need of such supports Provide in-school supports to primary and secondary students in need of developmental and educational supports.	This action, in itself, does not relate to land use activities and does not have the potential to effect European Sites.	Out
High Level Goal 10	A Learning environment with Broad Participation in Further / Higher Education, continual learning and development.	This goal, in itself, does not relate to land use activities and does not have the potential to effect European Sites.	Out
SCO 9 :	Increase participation levels in further / higher education, continual learning and development	This objective, in itself, does not relate to land use activities and does not have the potential to effect European Sites.	Out
t 2.1	Deliver an extensive programme of further and higher education to people outside the labour force (i.e. those at work and the unemployed) and older people Support innovative developmental initiatives that encourage, empower and incentivise individuals to consider, engage with and	This objective, in itself, does not relate to land use activities and does not have the potential to effect European Sites.	Out

	Text	Assessment	Screened In/Out
	<i>participate in learning opportunities, regardless of their age</i>		
t 2.2	Provide childcare services, supports and incentives to those who wish to access further and higher education <i>Deliver programmes of Further Education to people who are employed, unemployed or who are outside the labour force, regardless of their age.</i>	This action, in itself, does not relate to land use activities and does not have the potential to effect European Sites.	Out
t 2.3	<i>Deliver programmes of Continual learning and Development to people, regardless of their age</i>	This action, in itself, does not relate to land use activities and does not have the potential to effect European Sites.	Out
t 2.4	Support older people to participate in continual learning and development	This objective, in itself, does not relate to land use activities and does not have the potential to effect European Sites.	Out
Theme: Research and Development			
High Level Goal 11	Exploit the Enterprise/Social/Academic partnerships.	This goal does not relate to land use change or activities and will have no direct or indirect relationship to European Sites.	Out
Sustainable Economic Development Objectives (SEDO) SEDO 7	Increase Enterprise R & D activity <i>Increase Academic/Sectoral Collaborative Research and Development in the Enterprise and Social sectors and its respective commercialisation and application</i>	This objective does not relate to land use change or activities and will have no direct or indirect relationship to European Sites.	Out
r 1.1	Develop collaborative networks of sufficient scale to investigate R & D opportunities <i>Support the development of collaborations between third level institutions and key industries</i>	This action does not relate to land use change or activities and will have no direct or indirect relationship to European Sites.	Out
r 1.2	Develop partnerships between third	This action does not relate to land use change or	Out

	Text	Assessment	Screened In/Out
	level institutions and key industries in order to exploit R & D opportunities Support the commercialisation of R & D activity by converting the results into viable enterprises.	activities and will have no direct or indirect relationship to European Sites.	
R1.3	Support the expansion of supply-chain activity by encouraging smaller enterprises to service larger ones	This action does not relate to land use change or activities and will have no direct or indirect relationship to European Sites.	Out
R1.4	Support the development of a National Aerospace and Aviation Institute in Shannon	This action does not relate to land use change or activities and will have no direct or indirect relationship to European Sites.	Out
R1.5	Support the development of collaborations between third level institutions and social sectors/organisations	This action does not relate to land use change or activities and will have no direct or indirect relationship to European Sites.	Out
R1.6	Examine root causes of poverty and social exclusion and identify best practice in addressing the root causes and monitor progress	This action does not relate to land use change or activities and will have no direct or indirect relationship to European Sites.	Out
Theme: Climate Change and Energy			
High Level Goal 12:	Pursue Energy Efficiency solutions In Terms of Energy Use – Reduce Greenhouse Gasses and Increase its Efficiency	Chapter Ten of the Clare CDP addresses energy including renewable energy and energy efficiency. In addition, Objectives 6.7 and 6.8 support this goal.	Out
Sustainable Economic Development Objectives (SEDO) SEDO 8	Increase energy efficiency in the County SEDO 8: Reduce Energy use and reduce Greenhouse Gas Emissions and Increase the efficiency of energy use	Chapter Ten of the Clare CDP addresses energy including renewable energy and energy efficiency. In addition, Objectives 6.7 and 6.8 support this goal.	Out
C1.1	As a means of de-carbonising the economic and social sectors, thus reducing Greenhouse Gases, we will	Chapter Ten of the Clare CDP addresses energy including renewable energy and energy efficiency	Out

	Text	Assessment	Screened In/Out
	<i>support the increased use of renewable energy in the Transport, Residential, Commercial and Agricultural sectors</i>		
c 1.2	Support energy efficiency in industry and communal programmes at town and village level and in households	Chapter Ten of the Clare CDP addresses energy including renewable energy and energy efficiency. In addition, Objectives 6.7 and 6.8 support this goal.	Out
c 1.2	Support public sector bodies to achieve ISO Energy Standards <i>Support public sector bodies to achieve energy efficiency targets in their use of energy and support them in adopting energy management systems (e.g. ISO 50001)</i>	This action does not relate to land use change or activities and will have no direct or indirect relationship to European Sites.	Out
High Level Goal 13	Collectively and individually engage in Renewable Energy Production <i>In Terms of Energy Production – Increase the Production of Renewable Energy</i>	<p>This action seeks to ensure consistency between the LECP and the Renewable Energy Strategy.</p> <p>Variation No 1 to the Clare CDP the Renewable Energy Strategy (RES) has undergone Stage 1 Screening and Stage 2 Appropriate Assessment under the Habitats Directive.</p> <p>The Habitats Directive Assessment of the Renewable Energy Strategy has informed the adopted RES so that its potential impact on European Sites was minimised. Mitigation measures have been incorporated into the RES to ensure compliance with the Habitats Directive.</p> <p>Any renewable energy projects supported by this goal will require such projects to implement all relevant measures outlined in the RES and the NIR of the RES that aim to safeguard European Sites.</p> <p>This requirement will ensure that this goal will not have the potential to facilitate renewable energy</p>	Out

	Text	Assessment	Screened In/Out
Sustainable Economic Development Objectives (SEDO) SEDO 2: c 2.1		projects that have the potential to result in adverse effects to European Sites.	
	Expand renewable energy production in the County	See assessment for above High Level Goal	Out
	Support renewable energy production on land and off-shore by a range of appropriate technologies Support on-land and off-shore renewable energy production by a range of appropriate technologies	See assessment for above High Level Goal	Out
High Level Goal 14 SEDO 3 c 3.1 c 3.2 C3.3 C3.4 C3.5	Proactively address Climate Change.	See assessment for above High Level Goal	Out
	Create a county that is responsive to climate change and acts as a custodian of our natural heritage and biodiversity	In addition to above assessment for High Level Goal, a number of objectives in the CDP support the protection of natural heritage such as 17.1, 17.2 and 17.3.	Out
	Support awareness of and responses to climate change and to environmental quality (Air and Water Quality)	See assessment for SEDO 3	Out
	Develop and deliver Climate Change Adaptation Plan for the county	CDP Objective 9.13 indirectly supports this action and the action, in itself, does not relate to land use activities and does not have the potential to effect European Sites.	Out
	Develop and deliver a Climate Change Mitigation Plan for the county	CDP Objective 9.13 indirectly supports this action and the action, in itself, does not relate to land use activities and does not have the potential to effect European Sites.	Out
	Support awareness of and protect/enhance and, where appropriate, contribute to the substantial recovery of the county's Natural Heritage and Biodiversity.	<i>a number of objectives in the CDP support the protection of natural heritage such as 17.1, 17.2 and 17.3. This action does not have the potential to negatively effect European Sites.</i>	Out
	Support the development of the County's environmental and green	<i>Strategic Aims 17.1 of the CDP support this action.</i>	Out

	Text	Assessment	Screened In/Out
	<i>infrastructure e.g. the Shannon Green Infrastructure Plan.</i>		

Table 5.1 lists the all High Level goals, strategic objectives and actions contained within the LECP, included those that have been altered or additional actions provided. Each of these have been screened out for their potential to result in likely significant effects to European Sites.

These have been screened out for one or more of the following reasons:

- The objective does not relate to the physical environment or land use and is concerned with service delivery; co-ordination and/or the promotion of networks.
- The objective relates to, or has the potential to relate to the physical environment or land use but is of a broad strategic nature that does not specify a quantum or location for future land use and development.
- The objective has the potential to result in overall positive environmental effects that will not have the potential to negatively affect European Sites.

Furthermore it is noted that Objectives and actions outlined in the LECP relating to the physical environment, economic development and land use are consistent with the County Development Plans and other high level plans and strategies such as the Renewable Energy Strategy. The high level goals seek to support employment, enterprise & economic development; community and personal wellbeing; education and training; research and development and climate change and energy. The assessment of each of these objectives in the SEA Screening and this HDA Screening illustrates that these objectives are found to complement, promote and strengthen existing policies and objectives contained in the County Development Plans and depending on the specific project(s) (yet to be developed) a variety of existing Development Plan policies and objectives will apply. Section 9 of the LECP also shows how the above high level goals, strategic objectives and actions are consistent with a range of policies/objectives in the draft CEP 2017-2023 which will apply, once adopted.

It is also noted that the high level goals of the LECP do not set the framework for future development consent of projects. In this regard, they will not be placing limits on activities or development, influence location, nature, size or operating conditions nor will they dictate or specifically direct the allocation of resources. Specific projects/ developments, yet to be devised will be subject to normal planning requirements including the Habitats Directive Article 6 procedure as appropriate. Having regard to the foregoing no significant effects to European Site have been identified or are envisaged.

6 In-Combination Effects

6.1 In-Combination Effects with Other Plans

The High-Level Goals, Strategic Objectives and actions of the LECP are consistent with the existing County Development Plan, which has undergone Habitats Directive Assessment. The HDA of the Development Plans concluded that they will not have any likely significant effects on European Sites, if the range of environmental and natural heritage policy safeguards outlined in the Plans are implemented. The policy safeguards contained within the Development Plan that aim to protect the natural environment and European Sites will also apply to all of the LECP High-level Goals, Objectives and actions. Examples of some of these CDP Objectives have been outlined in Table 5.1. Adherence

to the range of environmental safeguard measures in the Development Plan will ensure these goals of the LECP avoid likely significant effects to European Sites.

The LECP outlines specific objectives that are consistent with Variation No. 1 of the County Development – The Renewable Energy Strategy. A Habitats Directive Assessment has been undertaken for this Strategy and has found that provide all relevant mitigation measures are implemented the Strategy will not have the potential to result in likely significant effects to European Sits. .

6.2 In-combination Effects of the LECP High-Level Goals

As all of the individual High-Level Goals of the LECP have been assessed as not have the potential, in their own right, to result in likely significant effects, there will be no potential for them to combine with other goals of the LECP to result in cumulative negative effects.

7 Screening Conclusion

This Habitats Directive Screening Statement in support of Appropriate Assessment has been undertaken in accordance with current available guidance. In particular the DEHLG (2010) and SNH (2015) guidance documents have guided the approach to this screening.

The principle trigger for Appropriate Assessment would be if the updated High Level Goals, objectives and actions were likely to have significant effects on a European site or if sections 9 and 10 of the LECP also triggered likely significant effects. As these latter sections relate to consistency with the draft CDP and other strategies, diversity proofing and monitoring, no likely significant effects are considered. Hence sections 9 and 10 of this assessment were not included in Table 5.1.

The LECP has been formulated in a manner that is consistent with the objectives of the core strategy and other objectives of the development. The policies and objectives of the Clare County Development Plan 2011-2017 have been devised to anticipate and avoid the need for development that would be likely to significantly and adversely affect the integrity of any Natura 2000 site or areas of high ecological value/interest.

Each of the updated High-level Goals, objectives and actions of the LECP have been assessed for their potential to result in likely significant effects to European Sites. None were identified as having the potential to result in likely significant effects. In addition no negative cumulative effects have been identified as a result of the potential interaction between Goals of the LECP, or with the aims, Policies or Objectives of other relevant Plans.

Any developments (direct or indirect) permitted on foot of the actions/objectives of the LECP shall be required to conform to National and European regulations and legislation for the prevention of environmental effects which would adversely impact on the integrity and conservation objectives of Natura 2000 sites. This along with the natural heritage (Chapter 17), core strategy objectives (Chapter 2) and other objectives contained in the Clare County Development Plan 2011-2017 will ensure that no development will be permitted that will significantly adversely affect the integrity of a European site. The draft CDP 2017-2023 once adopted will be applied, as appropriate and will ensure that no development will be permitted that will significantly adversely affect the integrity of a European site.

Therefore, in accordance with the Methodological guidance on the provision of Article 6(3) and (4) of the Habitats Directive 92/43/EEC, it is concluded that the LECP has resulted in a finding of no significant effects, and therefore a Stage II Appropriate Assessment is not required.