



18th March 2024

Dear Sir / Madam

As part of the Shannon River Bridge construction works, we wish to inform you that we will be taking delivery of large steel girders at night-time on Monday & Tuesday nights 1st & 2nd April and again on Monday & Tuesday nights 8th & 9th April. The deliveries are expected to arrive between midnight and 2am but subject to traffic conditions on the night. The deliveries will be escorted by the haulage company and approach the Ballina / east side of the bridge via the R496.

We will be building a crane onsite from Monday 25th to Friday 29th March. Roolagh junction R496 and local access on R494 will remain open during this time. However, night time works will be required for one night either Wednesday or Thursday night to complete the crane build. Local access traffic on the R494 will be diverted around the crane boom @ Roolagh junction via the existing island and traffic management will be in place.

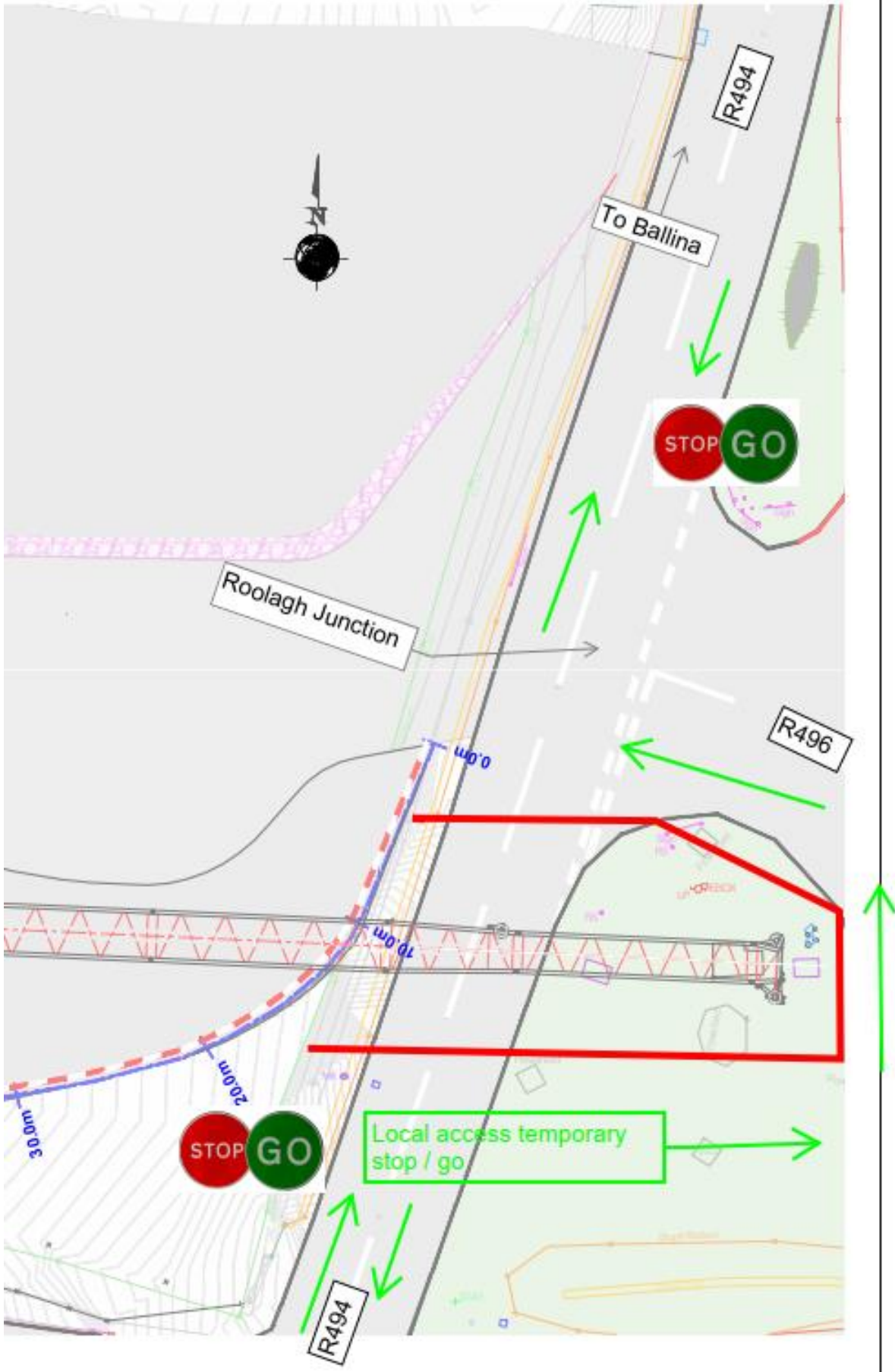
We apologise for any inconvenience caused.

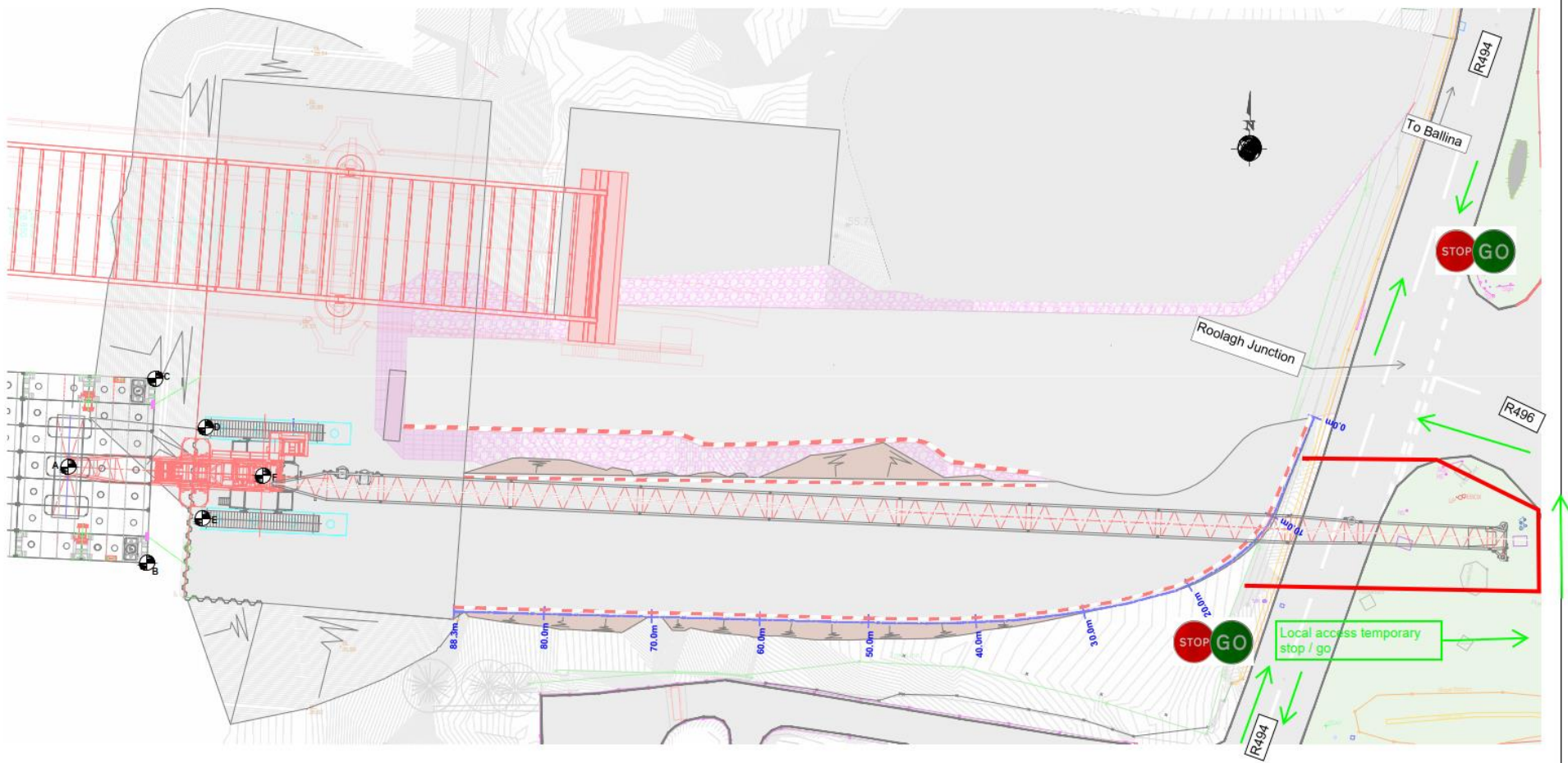
Regards

Brian Lynch

Site Agent

John Sisk & Sons Ltd





Temporary Traffic Management – night works Wednesday 27th or Thursday 28th March 2024