

KEY PLAN
(Scale 1:10,000)



General Notes

(i) Hard copies, dwf and pdf will form a controlled issue of the drawing. All other formats (dwg etc.) are deemed to be an uncontrolled issue and any work carried out based on these files is at the recipients own risk. RPS will not accept any responsibility for any errors from the use of these files, either by human error by the recipient, listing of the un-dimensioned measurements, compatibility with the recipients software, and any errors arising when these files are used to aid the recipients drawing production, or setting out on site.

(ii) DO NOT SCALE, use figured dimensions only.

(iii) This drawing is the property of RPS, it is a project confidential classified document. It must not be copied used or its contents divulged without prior written consent. The needs and expectations of client and RPS must be considered when working with this drawing.

(iv) Information including topographical survey, geotechnical investigation and utility detail used in the design have been provided by others.

(v) All Levels refer to Ordnance Survey Datum, Malin Head.

St/Pos	Date	Drn/Chk	Amendment / Issue	App
P01	Dec.'19	DC/FC	Issue For Approval	AOB
	Mar.'19	DC/FC	Issue For Information	AOB

rps MAKING COMPLEX EASY

Innishmore, Ballincollig, Co. Cork, Ireland

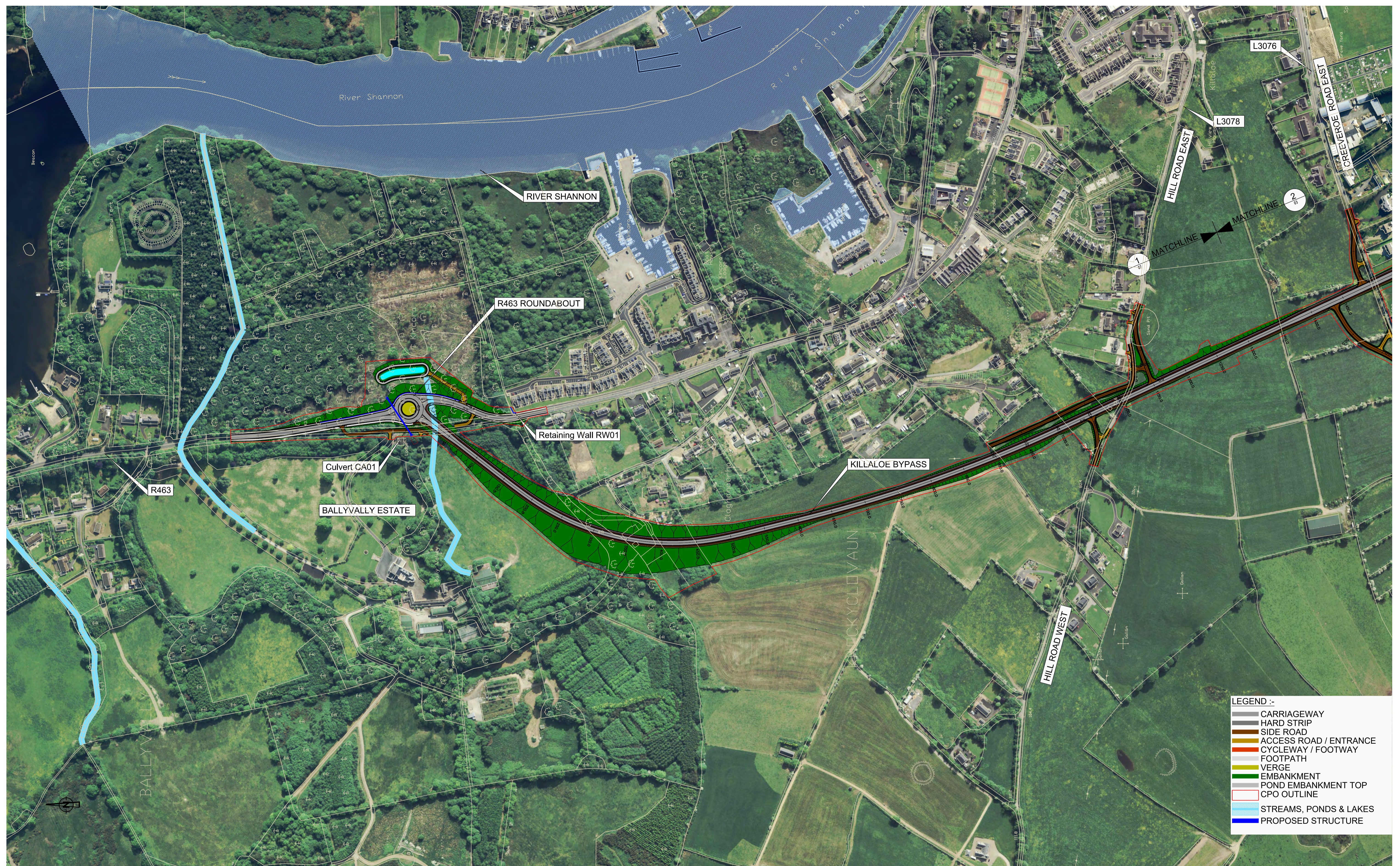
T +353 21 4665900
W www.rpsgroup.com/ireland
E ireland@rpsgroup.com

Model File Identifier
MCT0741-RPS-00-XXXX-DR-C-DG0002

Scale	As shown @ A1 Half @ A3
Created on	Mar'19
Sheets	01 of 5

Project	Killaloe Bypass, Shannon Bridge Crossing & R494 Improvement
Title	Overall Scheme Layout Key Plan (Sheet 1 of 5)
File Identifier	MCT0741-RPS-00-XXXX-DR-C-DG0002-01
Status	S1
Rev	P02.03

R:\MCT0741 - Killaloe Bypass and Shannon Bridge\6.0 Drawings\Display\MCT0741-RPS-00-XXXX-DR-C-DG0002.dwg



LEGEND :-

- CARRIAGEWAY
- HARD STRIP
- SIDE ROAD
- ACCESS ROAD / ENTRANCE
- CYCLEWAY / FOOTWAY
- FOOTPATH
- VERGE
- EMBANKMENT
- POND EMBANKMENT TOP
- CPO OUTLINE
- STREAMS, PONDS & LAKES
- PROPOSED STRUCTURE

PLAN LAYOUT PART 1 of 4
(Scale 1: 2,500)

Client

Project Ireland 2040
Building Ireland's Future

CLARE COUNTY COUNCIL

Comhairle Contae Thiobraid Árann
Tipperary County Council

Department of Transport, Tourism and Sport

General Notes

(i) Hard copies, dwf and pdf will form a controlled issue of the drawing. All other formats (dwg etc.) are deemed to be an uncontrolled issue and any work carried out based on these files is at the recipients own risk. RPS will not accept any responsibility for any errors from the use of these files, either by human error by the recipient, listing of the un-dimensioned measurements, compatibility with the recipients software, and any errors arising when these files are used to aid the recipients drawing production, or setting out on site.

(ii) DO NOT SCALE, use figured dimensions only.

(iii) This drawing is the property of RPS, it is a project confidential classified document. It must not be copied used or its contents divulged without prior written consent. The needs and expectations of client and RPS must be considered when working with this drawing.

(iv) Information including topographical survey, geotechnical investigation and utility detail used in the design have been provided by others.

(v) All Levels refer to Ordnance Survey Datum, Malin Head.

St/Pos	Date	Dim/Chk	Amendment / Issue	App
P01	Dec.19	DC/FC	Issue For Approval	AOB
P01	Mar.19	DC/FC	Issue For Information	AOB

rps MAKING COMPLEX EASY

Innishmore, Ballincollig, Co. Cork, Ireland

T +353 21 4665900
W www.rpsgroup.com/ireland
E ireland@rpsgroup.com

Model File Identifier
MCT0741-RPS-00-XXXX-DR-C-DG0002

Scale	As shown @ A1 Half @ A3	Project	Killaloe Bypass, Shannon Bridge Crossing & R494 Improvement
Created on	Mar'19	Title	Overall Scheme Layout Part 1 of 4 (Sheet 2 of 5)
Sheets	02 of 5	File Identifier	MCT0741-RPS-00-XXXX-DR-C-DG0002- 02
Status	S1	Rev	P02.03

R:\MCT0741 - Killaloe Bypass and Shannon Bridge\6.0 Drawings\Display\MCT0741-RPS-00-XXXX-DR-C-DG0002.dwg



PLAN LAYOUT PART 2 of 4
(Scale 1: 2,500)

Client

Project Ireland 2040
Building Ireland's Future

CLARE COUNTY COUNCIL

Comhairle Contae Thiobraid Árann
Tipperary County Council

Ap Roinn Iompair
Turastais agus Spóirt
Department of Transport,
Tourism and Sport

General Notes

(i) Hard copies, dwf and pdf will form a controlled issue of the drawing. All other formats (dwg etc.) are deemed to be an uncontrolled issue and any work carried out based on these files is at the recipient's own risk. RPS will not accept any responsibility for any errors from the use of these files, either by human error by the recipient, listing of the un-dimensioned measurements, compatibility with the recipient's software, and any errors arising when these files are used to aid the recipient's drawing production, or setting out on site.

(ii) DO NOT SCALE, use figured dimensions only.

(iii) This drawing is the property of RPS, it is a project confidential classified document. It must not be copied used or its contents divulged without prior written consent. The needs and expectations of client and RPS must be considered when working with this drawing.

(iv) Information including topographical survey, geotechnical investigation and utility detail used in the design have been provided by others.

(v) All Levels refer to Ordnance Survey Datum, Malin Head.

St/Pos	Date	By/Chk	Amendment / Issue	App
S1	Dec.'19	DC/EC	Issue For Approval	AOB
P01	Mar.'19	DC/EC	Issue For Information	AOB
St/Pos	Date	By/Chk	Amendment / Issue	App

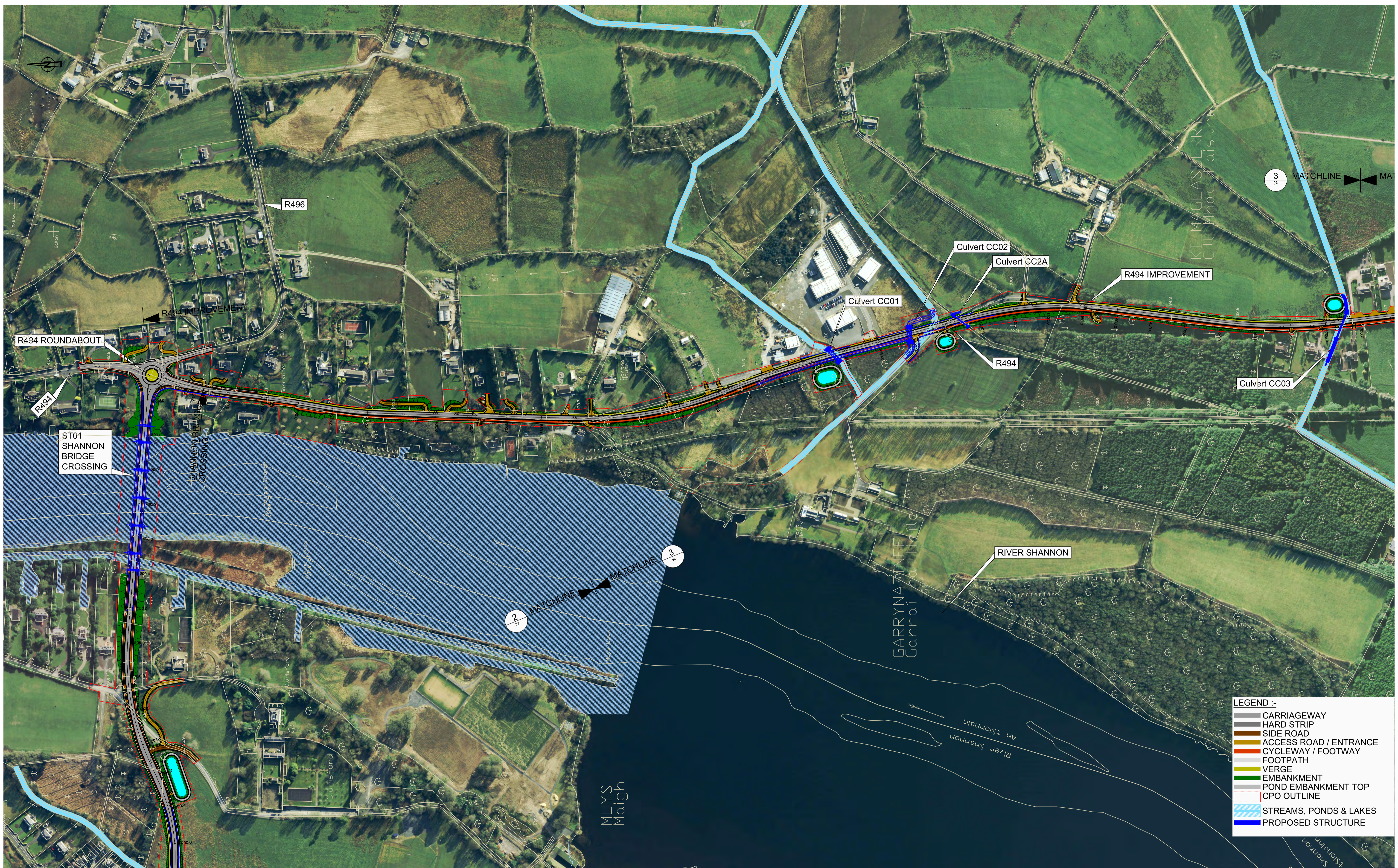
rps MAKING COMPLEX EASY

Innishmore,
Ballincollig,
Co. Cork, Ireland

T +353 21 4665900
W www.rpsgroup.com/ireland
E ireland@rpsgroup.com

Model File Identifier
MCT0741-RPS-00-XXXX-DR-C-DG0002

Scale	As shown @ A1 Half @ A3	Project	Killaloe Bypass, Shannon Bridge Crossing & R494 Improvement
Created on	Mar'19	Title	Overall Scheme Layout Part 2 of 4 (Sheet 3 of 5)
Sheets	03 of 5	File Identifier	MCT0741-RPS-00-XXXX-DR-C-DG0002-03
Status	S1	Rev	P02.03



PLAN LAYOUT PART 3 of 4
(Scale 1: 2,500)

Client

Project Ireland 2040
Building Ireland's Future

CLARE COUNTY COUNCIL

Comhairle Contae Thiobraid Árann
Tipperary County Council

General Notes

(i) Hard copies, dwf and pdf will form a controlled issue of the drawing. All other formats (dwg etc.) are deemed to be an uncontrolled issue and any work carried out based on these files is at the recipients own risk. RPS will not accept any responsibility for any errors from the use of these files, either by human error by the recipient, listing of the un-dimensioned measurements, compatibility with the recipients software, and any errors arising when these files are used to aid the recipients drawing production, or setting out on site.

(ii) DO NOT SCALE, use figured dimensions only.

(iii) This drawing is the property of RPS, it is a project confidential classified document. It must not be copied used or its contents divulged without prior written consent. The needs and expectations of client and RPS must be considered when working with this drawing.

(iv) Information including topographical survey, geotechnical investigation and utility detail used in the design have been provided by others.

(v) All Levels refer to Ordnance Survey Datum, Malin Head.

St/Pos	Date	By/Chk	Amendment / Issue	App
P01	Dec.'19	DC/FC	Issue For Approval	AOB
P01	Mar.'19	DC/FC	Issue For Information	AOB
St/Pos	Date	By/Chk	Amendment / Issue	App

rps MAKING COMPLEX EASY

Innishmore, Ballincollig, Co. Cork, Ireland

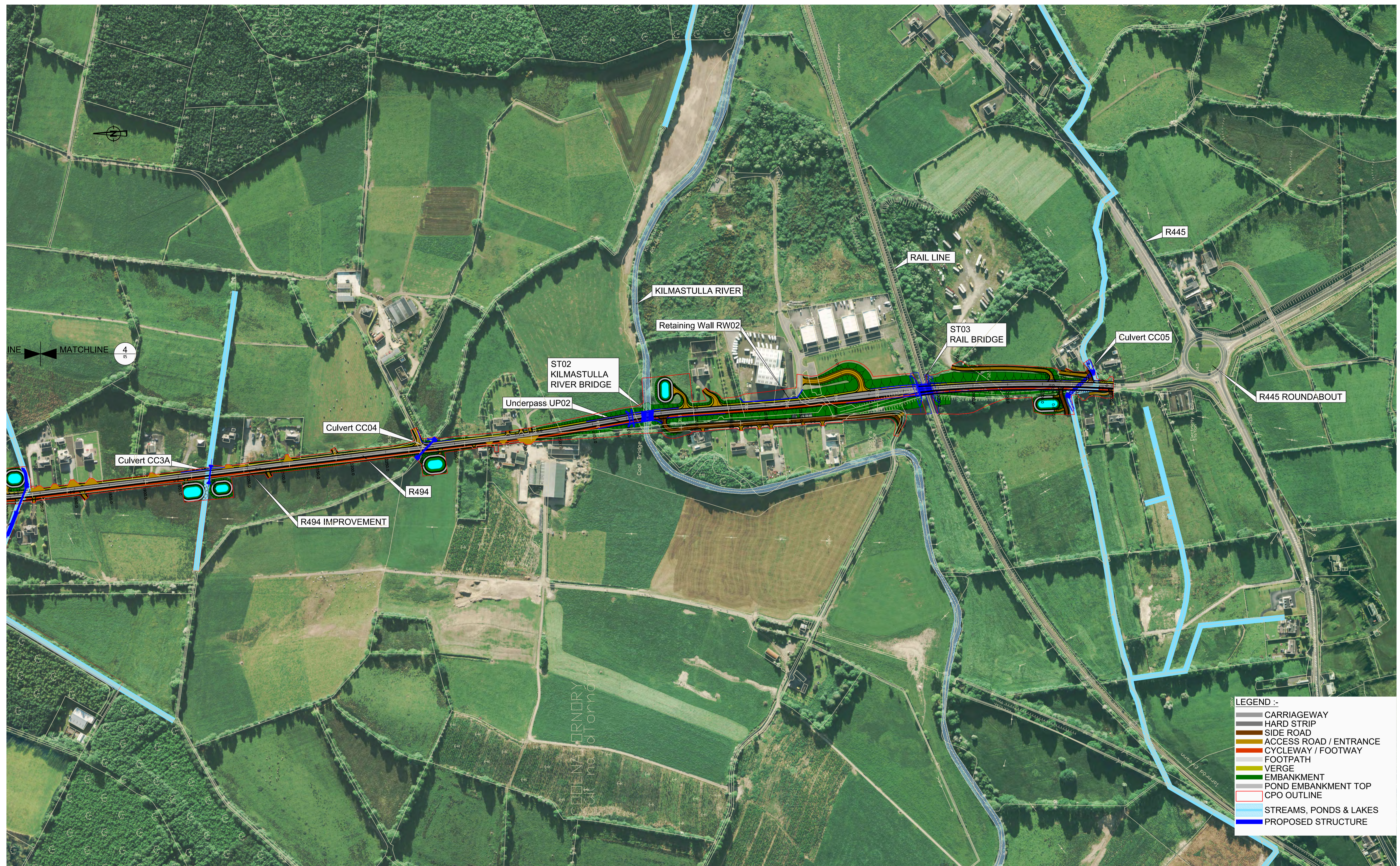
T +353 21 4665900
W www.rpsgroup.com/ireland
E ireland@rpsgroup.com

Model File Identifier
MCT0741-RPS-00-XXXX-DR-C-DG0002

Scale	As shown @ A1 Half @ A3
Created on	Mar'19
Sheets	04 of 5

Project	Killaloe Bypass, Shannon Bridge Crossing & R494 Improvement	
Title	Overall Scheme Layout Part 3 of 4 (Sheet 4 of 5)	
File Identifier	MCT0741-RPS-00-XXXX-DR-C-DG0002- 04	Status
Rev	P02.03	Rev

R:\MCT0741 - Killaloe Bypass and Shannon Bridge\6.0 Drawings\Display\MCT0741-RPS-00-XXXX-DR-C-DG0002.dwg



PLAN LAYOUT PART 4 of 4
(Scale 1: 2,500)

Client

Project Ireland 2040
Building Ireland's Future

CLARE COUNTY COUNCIL
Comhairle Contae Thiobraid Árann
Tipperary County Council

Ap Roinn Iompair
Turasoireachta agus Spóirt
Department of Transport,
Tourism and Sport

General Notes

(i) Hard copies, dwf and pdf will form a controlled issue of the drawing. All other formats (dwg etc.) are deemed to be an uncontrolled issue and any work carried out based on these files is at the recipient's own risk. RPS will not accept any responsibility for any errors from the use of these files, either by human error by the recipient, listing of the un-dimensioned measurements, compatibility with the recipient's software, and any errors arising when these files are used to aid the recipient's drawing production, or setting out on site.

(ii) DO NOT SCALE, use figured dimensions only.

(iii) This drawing is the property of RPS, it is a project confidential classified document. It must not be copied used or its contents divulged without prior written consent. The needs and expectations of client and RPS must be considered when working with this drawing.

(iv) Information including topographical survey, geotechnical investigation and utility detail used in the design have been provided by others.

(v) All Levels refer to Ordnance Survey Datum, Malin Head.

St/Pos	Date	By/Chk	Amendment / Issue	App
S1	Dec.'19	DC/FC	Issue For Approval	AOB
P01	Mar.'19	DC/FC	Issue For Information	AOB
St/Pos	Date	By/Chk	Amendment / Issue	App

rps MAKING COMPLEX EASY

Innishmore,
Ballincollig,
Co. Cork, Ireland

T +353 21 4665900
W www.rpsgroup.com/ireland
E ireland@rpsgroup.com

Model File Identifier
MCT0741-RPS-00-XXXX-DR-C-DG0002

Scale	As shown @ A1 Half @ A3	Project	Killaloe Bypass, Shannon Bridge Crossing & R494 Improvement
Created on	Mar'19	Title	Overall Scheme Layout Part 4 of 4 (Sheet 5 of 5)
Sheets	05 of 5	File Identifier	MCT0741-RPS-00-XXXX-DR-C-DG0002-05
Status	S1	Rev	P02.03

R:\MCT0741 - Killaloe Bypass and Shannon Bridge\6.0 Drawings\Display\MCT0741-RPS-00-XXXX-DR-C-DG0002.dwg