

Inter-Agency Co-ordination for Severe Weather Events

Assistant Chief Fire Officer
Cormac Falvey



COMHAIRLE CONTAE AN CHLÁIR
CLARE COUNTY COUNCIL

Inter-Agency Co-ordination for Severe Weather Events

Background

Preparation

Response

Communications



COMHAIRLE
CONTAE AN CHLÁIR

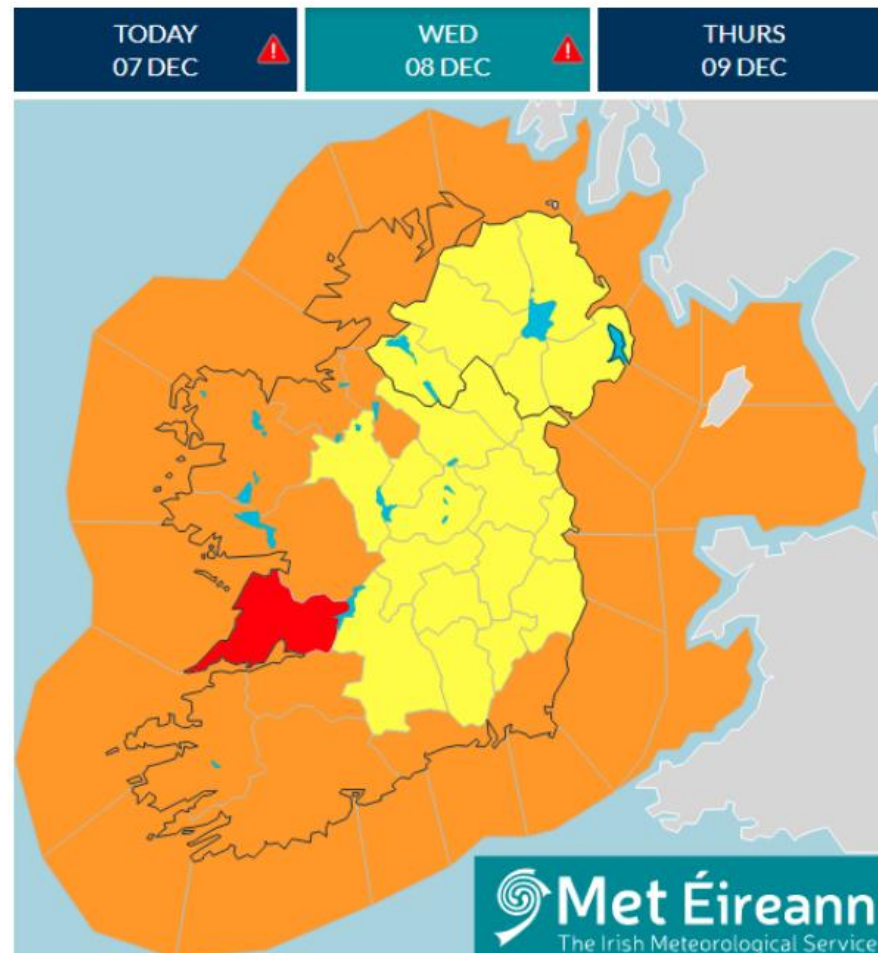
CLARE
COUNTY COUNCIL



COMHAIRLE CONTAE AN CHLÁIR
CLARE COUNTY COUNCIL

Co. Clare Severe Weather Events

2022	Storm Eunice Cold Snap
2021	Rain & Snow Storm Barra
2020	Storm Brendan Storm Ciara Storm Denis Storm Jorge
2019	Storm Atiyah Storm Lorenzo
2018	Storm Eleanor Storm Emma Heatwave and drought Storm Callum



Storm Barra – December 2021

Preparation for Severe Weather

Severe Weather Assessment Team

- Monitor Forecasts
- Feedback for Municipal Districts
- Met Éireann Duty Forecaster
- Participate in National Co-ordination

Met Éireann

- Weather advisories and warnings
- Rain, wind, snow, ice, low temp
- River forecasts

OPW Storm Surge
 River Gauges

ESB River Shannon

Department of Agriculture Forest Fire
Warnings

Yellow

Not unusual weather,
localised danger

Be Aware

Orange

Infrequent, dangerous /
disruptive

Be Prepared

Red

Rare, extremely dangerous /
destructive

Take Action



Winter Service Plan

Priority 1 Essential

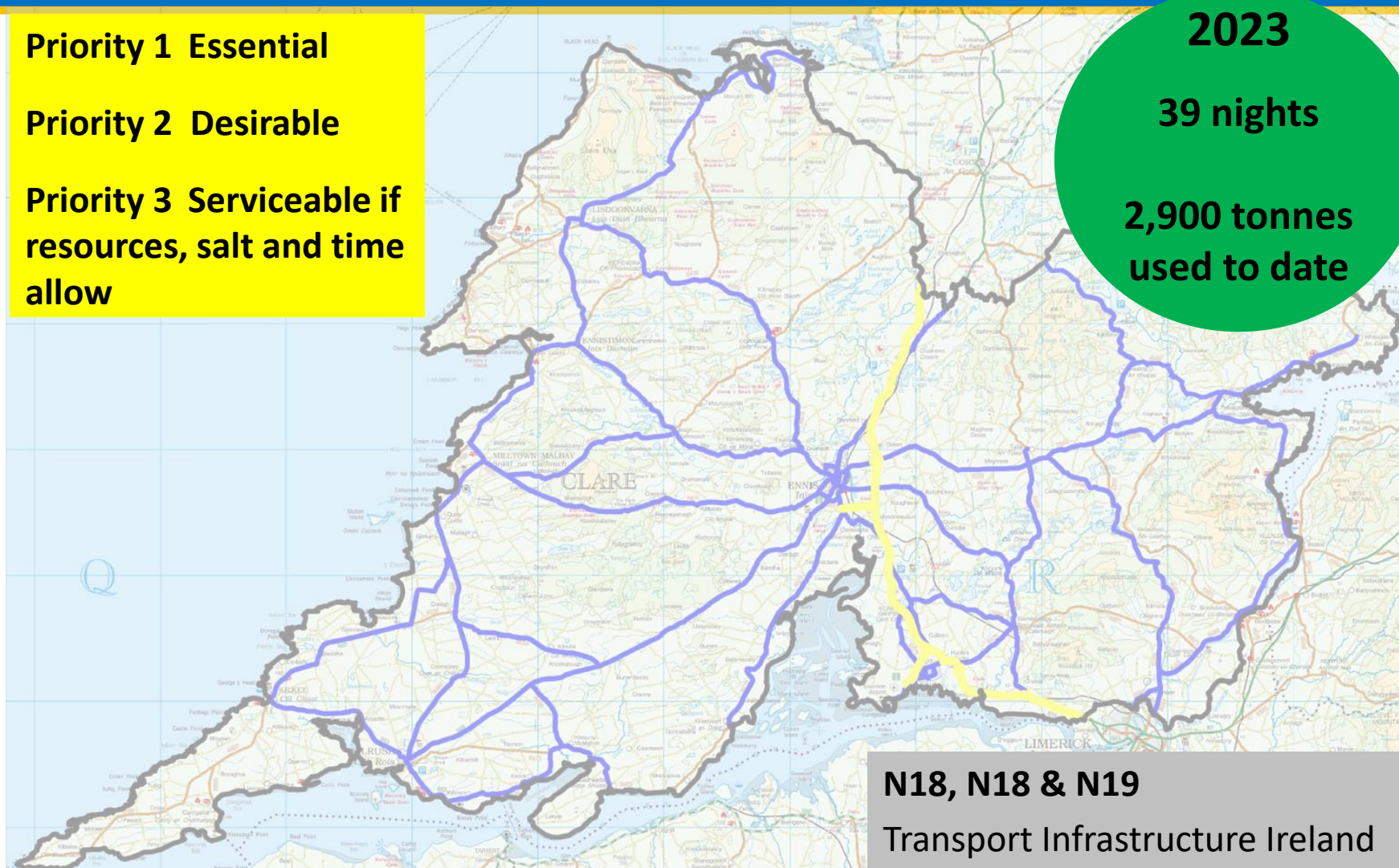
Priority 2 Desirable

**Priority 3 Serviceable if
resources, salt and time
allow**

2023

39 nights

**2,900 tonnes
used to date**



N18, N18 & N19

Transport Infrastructure Ireland



COMHAIRLE CONTAE AN CHLÁIR
CLARE COUNTY COUNCIL



4 Salt Barns

**Total 3,300
tonnes capacity**

← **Salt Barn @ Beechapark**

7 Salting Units

**55 – 100 tonnes
used each night**

**700km travelled
each night**

Clare Co Co Salting Unit ➔




**Springfield Clonlara,
February 2020**



Springfield Clonlara,
February 2020



An aerial photograph of a large, green, oval-shaped field. A dark, paved road curves around the perimeter of the field. To the left of the field, there is a construction site with various vehicles and equipment. The surrounding landscape is a mix of green fields and some trees. In the background, there are rolling hills under a clear blue sky.

**Construction started in
Aug 2021 on 850m
Embankment at
Springfield Clonlara**

**Flooding in
2009
2015
2020**



Ennis Flooding,
February 2020

Storm Eleanor – January 2018



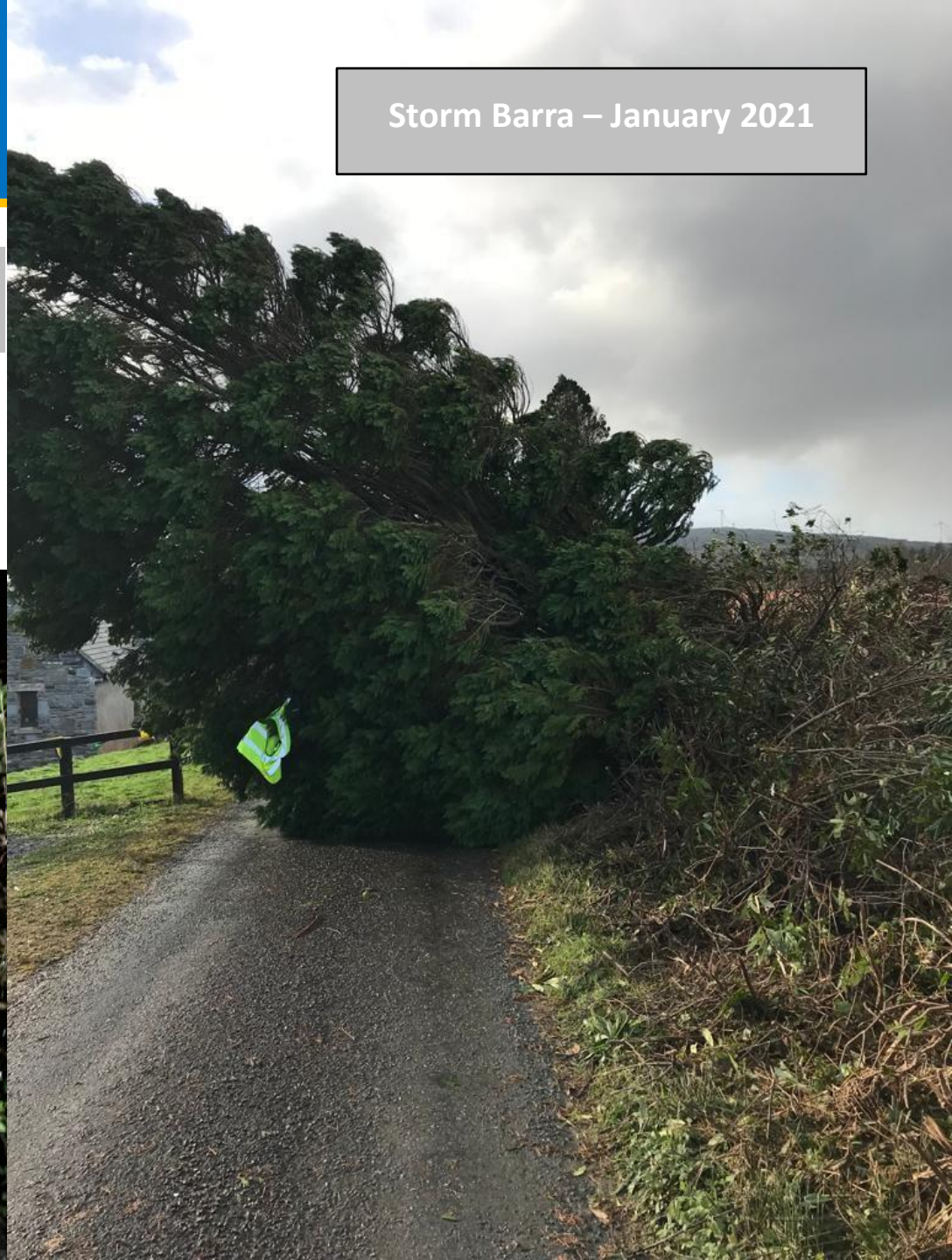
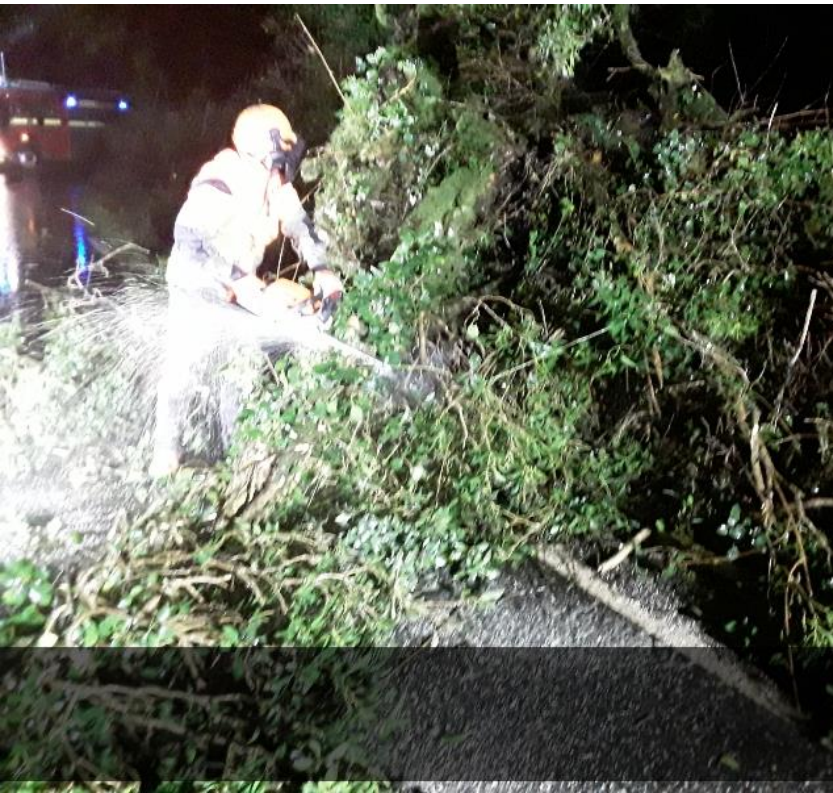
Coastal Protection at Lahinch



Wind Events

Storm Barra – January 2021

Safety of personnel



Communicating with the Public

MapAlerter

www.mapalerter.ie

- Free service
- Includes day to day events e.g. road works
- Specific to your address or location



Clare FM

Always available both before and after
Storm events

Social Media



COMHAIRLE CONTAE AN CHLÁIR
CLARE COUNTY COUNCIL

Co- ordination

Working Relationships

Knowledge of Personnel
on the ground



Major Emergency Management

Inter-Agency Co-ordination

Regional
Local
On-Site



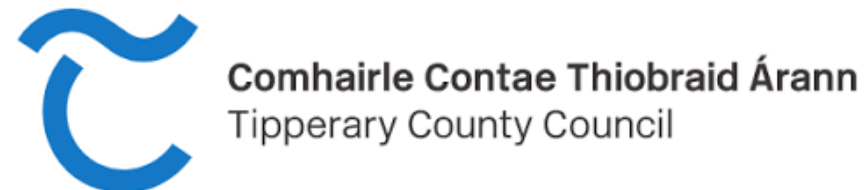
↑ Exercise at Shannon Airport



**Training
& Exercises**

← Seveso Exercise

Working with Other Agencies



Requirement to be affiliated with National Organisations

Standards of:

Competency, equipment,
training etc...

Health & Safety procedures

Insurance / liability



MAJOR EMERGENCY MANAGEMENT MID-WEST REGION

VOLUNTARY EMERGENCY SERVICES

RESOURCES & CAPABILITIES DOCUMENT





Go raibh míle maith agaibh
Thank You



COMHAIRLE CONTAE AN CHLÁIR
CLARE COUNTY COUNCIL